

MEMBERS:
BOOKING OPENS
7 JANUARY 2019

NON-MEMBERS:
BOOKING OPENS
4 FEBRUARY 2019

10th

MUSIC MAKING SINCE 1929

JULY - DECEMBER 2019

The first Rural Music School, our forerunner, was established in Hitchin in 1929 by Mary Ibberson and our July to December 2019 programme of courses, concerts and events aims to celebrate the enormous breadth of our activities to promote music education amongst students of all ages.

Highlights for singers in the second instalment of our 90th anniversary year include a new Musical Theatre course with Sarah Leonard and an English madrigal workshop with the opportunity to employ period pronunciation. For string players we have introduced a brand new course with Caroline Emery to explore the wealth of music written for double bass and a Cello Workshop with Julian Metzger. We also hope to excite wind and brass players with the opportunity to attend a Workshop with Bella Tromba's Jo Harris, Recorder Revival with Oonagh Lee and Elementary and Intermediate Saxes with Gerard McChrystal. Additional courses offering the opportunity to try something new include our Accompanying Silent Film course, Beyond Jazz Guitar and a new appreciation course led by Dr Katy Hamilton entitled At Home with Brahms and Friends.

There have also been additions to our concert series which in 2019 will include the folk jazz fusion duo Paul Hutchinson (accordion) and Karen Wilmhurst (clarinets), soprano Clare Wilkinson, jazz guitarist Simone Gubbiotti and medieval group Joglearesa. Our series contains some of the top performing artists in the UK and across the world, all set in an intimate and friendly atmosphere. With ticket prices at £15 they offer amazing value for money and pre-concert dining opportunities are also available to make your evening even more special.

We hope there is plenty to tempt you in our latest brochure. Please feel free to get in touch and tell us what you think, and let us know if there is anything else you would like to see: all suggestions are welcome.

If you would like to join our large family of Members and get involved further with our activities, including with our outreach and engagement programme, please do contact us.

We look forward to seeing you at Benslow Music very soon.

Dr Christopher Roberts
Head of Music

Peter Hewitt
Chief Executive

Chief Executive

Peter Hewitt

Head of Music

Dr Christopher Roberts

Director of Operations

Tim Sharp

Head of Finance

Steve Saint

House Manager

Liz Lipman

Finance Officer

Karen Luxon

President

Judith Weir CBE

Vice-Presidents

Steven Isserlis CBE, Philip Meaden, John Rutter CBE, Peter Stark, Melvyn Tan, Stephen Wilkinson MBE

Hon Vice-Presidents

Nona Blay, Jean Harris, Jen Lynch, Michael Willoughby

The Board

Tony Aston (Chair of Governors, Benslow Music Instrument Loan Scheme), Andy Baruch, Mark Bowen (Hon Secretary), Anne Conchie, Richard Dickins, Tim Gillott, Norma King, Peter Neville (Chair), Sedasivam Selvakumar, Roy Simpson, Catherine Steel (Hon Treasurer), Michael Taylor (Vice-Chair), John Witchell

Brochure design by Vicky Carlton, Mark Harrison

Printed by noirwell.co.uk

Marketing

Administrator

Vicky Carlton

Music

Administrator

Shadia El Tabch

Lettings

Administrator

Linda Steeples

Reception

Kirsty Barnes

Carline Bushen

Duty Manager

Ken Harriott

House Staff

Tess Knight
(house team leader)
Justyna Bartosik
Sarah Benham
Alison Goodwin
Denise Winterbottom

Chefs

Michelle Higgins
Tara Fraser
Zoe Tadhunter

Catering Assistant

Karen Volland

Kitchen Porter

Gary Day



THANK YOU!

YOU, OUR CLIENTS, ARE AT THE HEART OF OUR ACTIVITIES AND
FORM THE BACKBONE OF OUR FINANCIAL STABILITY

We are pleased to be in a position to continue to hold our course fees for 2019 at current levels despite the financial climate and increase in our overhead costs. We want to encourage as many people as possible to participate in our events during our 90th anniversary year. Don't forget that we continue to offer discounts for under 27s and bursaries to assist attendance on our courses.

We would like to take this opportunity to encourage you to make a donation to help us continue to develop our activities and campus and to share the gift of music both towards our centenary year in 2029 and beyond by using the form overleaf.

I/We would like to donate to Benslow Music Trust

Title and Full Name(s):

Email address:

Telephone:

Address:

Postcode:

REGULAR DONATION: STANDING ORDER AUTHORITY

To (name of your bank/building society):

Address (of your bank/building society):

Please pay: Barclays Bank Plc, 5/6 High Street, Hitchin, Herts

Sort Code: 20-41-12, Account No: 70140937

Name of account holder: Benslow Music Trust

The amount of (in figures): £

(in words):

On this date (please write date you want debit to be taken):

Please take this debit on the same date each month/year
(delete as appropriate) until further instruction.

This cancels my previous instructions dated:

Name on the account to be debited:

Sort Code:

Account Number:

Signed:

Printed:

Date:

ONE-OFF DONATION

BY CARD

Call us on 01462 459446 or complete the form on page 76 of this brochure and post to Benslow Music, Benslow Lane, Hitchin, SG4 9RB

BY BANK TRANSFER

Account No: 70140937

Sort Code: 20-41-12

Reference: (Your Full Name) Donation

BY CHEQUE

Please enclose a cheque with this form and post to Benslow Music, Benslow Lane, Hitchin, SG4 9RB. Cheques are payable to Benslow Music Trust

GIFT AID DECLARATION

Please complete the following Gift Aid Declaration. This allows us to claim tax relief on your donation (or membership fees), thus increasing the value of your gift.

I confirm that I want to Gift Aid my donations and membership subscriptions that I have made in the last 4 years and in future to Benslow Music Trust, Benslow Lane, Hitchin, SG4 9RB. I am a UK taxpayer, and understand that if I pay less Income Tax and/or Capital Gains tax than the amount of Gift Aid claimed on all my donations in that tax year it is my responsibility to pay any difference and that I may cancel this declaration at any time.

Signature

Date

CONTENTS

The Benslow Music Experience	04
Timetable and Guide to Standards	06
Our Library	07
Index to Courses	08
Strings (bowed and plucked, with or without keyboard)	10
Woodwind/Brass (with or without keyboard)	23
Strings and Wind (with or without other instruments or voices)	36
Keyboards	38
Vocal and Choral	42
Early Music	47
Jazz/Light/Popular	54
Folk/Traditional/Ethnic	58
Composing/Arranging/Theory/Technology	60
Relaxation and Exercise	62
Music Appreciation	64
Murder Mystery at Benslow Music	66
Benslow Music Open Day	67
Booking Information	68
Concerts	70
Monday Afternoon Concerts	71
Benslow Music Enterprises - for Business and Leisure	73
Giving/Membership/Advertising/Sponsorship	74
Booking/Membership Form	75/76
Travel Instructions	Inside back cover

COURSE BOOKING ARRANGEMENTS

Telephones will open from 9am on the days listed below and once all these bookings have been made, the team will then process postal and email applications. Please note online applications can be made through our website from Monday 4 February.

As the phone lines are so busy on the days booking opens we regret that we cannot process payments immediately, but instead we will reserve you a place and send you details of how to confirm with payment by email later that day.

MEMBERS

Courses for pre-formed string quartets and pre-formed string and piano ensembles only - **Monday 7 January, 9am**

All other courses - **Tuesday 8 January, 9am**

Details on how to become a Member and take advantage of priority booking and other benefits can be found on page 74.

NON-MEMBERS


Non-Members may book all courses by telephone, post or online - **Monday 4 February, 9am**

YOUNG PEOPLE

Guests under 27 on 1 January 2019 are entitled to a 25% discount on basic course fees. This reduction does not apply to room supplements.

Please note that any applications from those under the age of 18 should be discussed with us before booking to ensure that adequate safeguarding procedures are in place. Guests under the age of 16 must be accompanied by an adult.

BRING A FRIEND

For our anniversary year we are offering a special bring a friend discount scheme for certain courses. Where you see the  symbol next to a course and if you introduce a friend who is new to Benslow Music and persuade them to join the course, you will both receive a discount on the basic course fee. This reduction does not apply to room supplements.

AM I GOOD ENOUGH?

The answer is probably yes! We pride ourselves on bringing the very best out of our students, whatever their level of achievement. We specify an approximate ability range which will help you choose your course, but once happy with that - and we will gladly offer advice - nobody need feel that they are competing with anyone except themselves. Where a course is particularly demanding we say so, and our carefully selected tutors are expert at giving equal attention and respect to everyone. So don't be shy!

ARRIVING AND DEPARTING

Normally we ask guests to check in after about 4pm on the first day of a course. When this is different the course description should say so. If you have made a long journey and expect to arrive early please let us know.

Your welcome pack includes your key, vital information about Benslow Music, a course timetable and delegate list. Tea, coffee and cake is available until the bar opens at 6pm. Dinner is served at 6.30pm. If you are likely to arrive late, please let us know as soon as you can



and we will make arrangements to set a meal aside for you.

Most courses end with tea and cakes at 4pm on the final day, although the time can slightly vary from course to course.

Day courses begin at 10am. We break for an hour's lunch at 1pm and end around 5pm.

HOW TO GET HERE

Our campus is a five-minute walk from Hitchin train station, which is served by fast, frequent trains from Cambridge, Peterborough, London King's Cross and London St Pancras. Road access from the A1(M) and the M1 is swift, and we are within easy reach of Luton and Stansted airports. We have ample free car parking facilities.

SLEEP WELL

You might prefer a traditional Victorian bedroom with a lovely pine floor and antique furnishings, or you might feel more at home in a modern room. Whatever your choice, we offer a varied range of comfortable single and double en-suite and standard rooms. No more than three standard rooms share a bathroom and all



standard rooms have a wash basin. If you need more shampoo or shower gel or you have left your toothbrush or razor at home, please ask our Receptionist for help.

INTERNET

We provide campus-wide Wi-Fi free of charge.

FOOD AND DRINK

We freshly prepare all our food for main meals on the premises and use official Fairtrade produce wherever we can. Our chefs only use free range eggs, our fish is sustainably sourced, meat is farm assured and vegetables are all locally sourced. Where possible we use produce grown in our gardens. We can cater for people with special diets, as for example required on medical, religious or ethical grounds, when we are informed in advance (though please note that we cannot accommodate changes, likes or dislikes made on the day) and do our very best to offer alternatives for morning and afternoon breaks and for dessert. Fresh fruit is always available. If you would like a wider selection or prefer specific items then you are welcome to bring your own and we will store them for you. In line with current legislation we state the



allergens in each of our dishes and please ask our staff if you are in any doubt.

The Bar, often tended by the popular Ken, is open for business before and after lunch and in the evenings, and is always available to residents and visitors as a lounge area.

THE GARDENS

Our beautiful gardens are an integral part of the Benslow Music experience and provide an inviting space in which to relax and re-gather energies between sessions. You are welcome to wander freely. If Jif, our gardener, happens to be around and if he's not too busy doing something else, he will happily tell you about any plant species on the site and no doubt offer off-the-cuff tips for your own garden. The wooded parts of the grounds contain some magnificent tree specimens. Please take care not to get too close to the bee hives, particularly in swarming season.

OUR MUSIC FACILITIES

We are fortunate to have ten designated rehearsal and practice rooms, including two

halls suitable for larger ensembles and public events. Each space includes at least one piano. We also possess a fine Goble harpsichord modelled on a 1727 Christian Zell original as well as virginals, a spinet and a restored Broadwood square piano dating from the 1820s.

OBSERVERS

While some people prefer to come to a Benslow Music course alone, we are happy to host non-participating partners. Should your partner wish to observe the course in action, he or she may do so only at the tutor's discretion.

BED AND BREAKFAST

Whether or not you are a musician, you can take advantage of the idyllic calm of Benslow Music's campus simply for the sake of repose. When courses are in residence we are able to provide you with full board if you require it and if space allows. When courses are not in residence we are happy to accommodate clients on a Bed and Breakfast basis. If you are travelling from afar or simply want time to acclimatise to and/or recover from your

course then simply add an extra night (or two) to your stay at our competitive Bed and Breakfast rates.

STAY AND PLAY

Our Stay and Play product allows you to come with a few musician friends and play to your heart's content in a dedicated practice room equipped with a piano. All meals are provided so you can focus completely on your musical enjoyment.

GIFT VOUCHERS

Gift vouchers are available from as little as £1 and can be used to pay for courses, concerts, purchases from our shop and membership subscriptions. Please ask at Reception.

PARTY/CONFERENCE HIRE

If you are looking for somewhere to hold that all-important event, we can devise tailor-made residential and non-residential packages. Email info@benslowmusic.org or call us for details.

GUIDE TO STANDARDS

Elementary

Early development of technical and reading skills and/or limited confidence (e.g. Grades 1-2)

Ensemble Guide: Previously little or no experience of playing/singing with others

Lower Intermediate

Emerging confidence both technically and musically (e.g. Grades 3-5+)

Ensemble Guide: Not yet confident playing/singing one-to-a-part or solo work, more comfortable in groups

Upper Intermediate

Well grounded and increasing skills, reading and confidence (e.g. Grades 6-8)

Ensemble Guide: Perhaps first experience of playing/singing one-to-a-part or solo work

Advanced

Strong playing and reading skills (e.g. recent Grade 8/diploma)

Ensemble Guide: Experienced and confident

Please note that there may be more specific information in the individual course descriptions.

PART-TIME ATTENDANCE

On a few courses part-time attendance might be possible. Please ask us.

MUSIC AND EQUIPMENT

On some courses you might be required to bring your own music or equipment. Please ask about this at the time of booking. Music may be sent out in advance or available to download from our website.

STANDARD COURSE TIMETABLE

Course timetables may vary, please check notice boards on arrival.

*Breakfast is served from 8.00 on Saturdays and Sundays.

**Please vacate your bedroom before 9.15 (luggage may be stored in Reception before departure).

FIRST EVENING

16.00 – 18.00 Arrival and Registration

18.00 Bar opens

18.30 Supper

20.00 SESSION

21.00 Bar opens

SECOND AND

SUBSEQUENT DAYS

7.45* Breakfast

9.15 SESSION

10.45 Coffee

11.15 SESSION

12.45 Bar opens

13.00 Lunch

14.00 FREE TIME OR SESSION

16.00 Tea

16.30 SESSION

18.00 Bar opens

18.30 Supper

20.00 SESSION

21.00 Bar opens

FINAL DAY**

7.45* Breakfast

9.15 SESSION

10.45 Coffee

11.15 SESSION

12.45 Bar opens

13.00 Lunch

14.30 SESSION

16.00 Tea and Departure

THE BENSLOW MUSIC LIBRARY

All guests can make use of our extensive music library while on a Benslow Music course.

Members of Benslow Music Trust can use the library at any time. The library's holdings include miniature, study and full scores, songs, vocal scores, piano and instrumental pieces, chamber music parts, orchestral and dance band parts, books about music and music magazines. The library is staffed by volunteers on most afternoons and on Monday mornings.

Any donations to the library are accepted with the proviso that if we do not wish to retain them we can dispose of them through sale, donation or waste recycling.

The catalogue is available to download from our website: www.benslowmusic.org/library

Please note that items cannot normally be borrowed for the use of a third party (for instance parts for other courses or orchestras). Members can, however, borrow chamber music sets for ensembles in which they are involved.

Details on how to become a Member and take advantage of our library can be found on page 74.

E: library@benslowmusic.org



JULY				
Mon 1 - Wed 3 July	An Introduction to Music Therapy	19/267	62	
Mon 1 - Thu 4 July	Summer Saxes	19/335	23	
Mon 1 - Thu 4 July	String and Piano Chamber Music	19/336	10	
Mon 8 - Wed 10 July	Baroque Trio Sonatas with Da Camera	19/268	47	
Mon 8 - Wed 10 July	Discovering the World of Jazz	19/269	54	
Fri 12 - Sun 14 July	Late Starter String Orchestra	19/270	10	
Fri 12 - Sun 14 July	Late Starter Piano	19/271	38	
Fri 12 - Sun 14 July	An Introduction to Wind Chamber Music	19/272	23	
Sun 14 - Fri 19 July	The International Viol Summer School	19/501	47	
Mon 15 - Thu 18 July	Late Starter Violins	19/337	10	
Mon 22 - Sat 27 July	Big Band Summer School	19/502	54	
Mon 22 - Sat 27 July	Big Band Singing Summer School	19/503	54	
Sat 27 July	Come and Sing with John Rutter	19/JR1	42	
Sun 28 July	OPEN DAY		67	
Mon 29 July - Fri 2 August	Martin Outram's Viola Summer School	19/402	10	
Mon 29 July - Fri 2 August	Graeme Humphrey's Piano Summer School	19/403	38	
Mon 29 July - Fri 2 August	William Bruce's Cello Summer School	19/404	11	
Mon 29 July - Fri 2 August	Edwin Roxburgh's Composing Summer School	19/405	60	
AUGUST				
Fri 2 - Sun 4 August	The Benslow Concert Band	19/273	23	
Fri 2 - Mon 5 August	ABRSM Jazz Piano Syllabus for Piano Teachers	19/338	38	
Mon 5 - Fri 9 August	Sarah Leonard's Vocal Summer School	19/406	42	
Mon 5 - Fri 9 August	Philippa Davies' Flute Summer School	19/407	24	
Fri 9 - Mon 12 August	Summer String Orchestra with Robert Hodge	19/339	11	
Fri 9 - Mon 12 August	Christopher Gayford's Conducting Summer School	19/340	60	
Fri 9 - Mon 12 August	Carlos Bonell's Guitar Summer School	19/341	13	
Mon 12 - Thu 15 August	Baroque Buffet: Baroque on Modern Instruments	19/342	47	
Mon 12 - Thu 15 August	Madrigal and Partsong Summer School	19/343	42	
Fri 16 - Sun 18 August	John Playford in the 21st Century	19/274	48	

Fri 16 - Sun 18 August	T'ai Chi	19/275	63	
Fri 16 - Sun 18 August	Elementary Strings	19/276	13	
Fri 16 - Sun 18 August	Elementary Winds	19/277	25	
Sun 18 - Fri 23 August	Summer WindFest	19/504	25	
Fri 23 - Sun 25 August	"Amongst mouvements and retakes": Exploring Music and Dance in the 17th and 18th centuries	19/278	48	
Fri 23 - Sun 25 August	Jazz and Pop Singing	19/279	43	
Fri 23 - Sun 25 August	Brass Workshop with Bella Tromba's Jo Harris	19/280	26	
Sat 24 August	The Double Reed Day!	19/112	27	
Fri 30 August - Sun 1 September	String Quartets with the Wihan	19/281	13	
Fri 30 August - Sun 1 September	The Benslow Mandolin Weekend	19/282	13	
SEPTEMBER				
Sun 1 - Thu 5 September	Susanne Stanzeleit's Violin Summer School	19/408	14	
Mon 2 - Wed 4 September	Benslow Early Piano School: What Hummel tells us about Mozart, Haydn and Beethoven	19/283	39	
Fri 6 - Sun 8 September	Clarinet Weekend	19/284	27	
Fri 6 - Sun 8 September	Late Starter Cello Weekend with Jenny Curtis	19/285	14	
Mon 9 - Wed 11 September	Stephanie Reeve's Woodwind Band	19/286	29	
Mon 9 - Thu 12 September	Foundation String Chamber Music	19/344	14	
Fri 13 - Sun 15 September	RecorderFest	19/287	29	
Fri 13 - Sun 15 September	Folk Orchestra	19/288	58	
Fri 13 - Sun 15 September	Improve Your Aural Skills	19/289	60	
Sat 14 September	Flute Day with Elisabeth Hobbs	19/113	29	
Sun 15 September	Viola Day with Richard Muncey	19/114	14	
Mon 16 - Thu 19 September	English Lute Songs Old and New	19/345	49	
Mon 16 - Thu 19 September	Elementary and Intermediate Saxes	19/346	29	
Fri 20 - Sun 22 September	String and Piano Ensembles with the Primrose Quartet	19/290	15	
Mon 23 - Wed 25 September	Double Bass Extravaganza	19/291	15	
Mon 23 - Wed 25 September	Accompaniment to Silent Film	19/292	56	
Mon 23 - Thu 26 September	Rediscovering Rosenmüller	19/347	51	

Fri 27 - Sun 29 September	Fiddle Music of Scotland and Ireland	19/293	58
Fri 27 - Sun 29 September	The Clarsach Course	19/294	59
Fri 27 - Sun 29 September	Grade 5 Theory	19/295	61
Fri 27 - Sun 29 September	Preparing for your Piano Diploma	19/296	40
Mon 30 September - Thu 3 October	Mixed Chamber Music	19/348	36
OCTOBER			
Fri 4 - Sun 6 October	String Quartets with the Fitzwilliam	19/297	15
Fri 4 - Sun 6 October	At Home with Brahms and Friends	19/298	64
Sun 6 October	Murder Mystery at Benslow Music	19/MM2	66
Mon 7 - Thu 10 October	Graham Trew's Vocal Workshop	19/349	43
Mon 7 - Thu 10 October	Group Quartets with Jonathan Trout	19/350	16
Mon 7 - Thu 10 October	Recorder Revival with Oonagh Lee	19/351	30
Fri 11 - Sun 13 October	Intermediate Wind Chamber Music	19/299	31
Sun 13 October	"Those cares that do arise from painful melancholy": Depicting disaffection in the English madrigal	19/115	44
Mon 14 - Wed 16 October	Cuban Salsa with Marco Marconi	19/20A	56
Mon 14 - Wed 16 October	Performing for Hitchin	19/20B	36
Mon 14 - Wed 16 October	Beyond Jazz Guitar	19/20C	56
Mon 14 - Thu 17 October	Keeping it Fresh	19/352	40
Fri 18 - Sun 20 October	Harmoniemusik with Boxwood and Brass	19/20D	31
Fri 18 - Sun 20 October	Intermediate Strings	19/20E	16
Mon 21 - Wed 23 October	Late Starter String Orchestra	19/20F	17
Mon 21 - Wed 23 October	The Wonderful World of Musical Theatre	19/20G	44
Mon 21 - Wed 23 October	Bassoon Extravaganza with Martin Gatt	19/20H	31
Fri 25 - Sun 27 October	Oboe Extravaganza: Growing in Confidence	19/20I	33
Fri 25 - Sun 27 October	String Orchestra Plus	19/20J	37
Fri 25 - Sun 27 October	Ukulele Ensemble with Samantha Muir	19/20K	17
Mon 28 - Thu 31 October	Cello Orchestra	19/353	17
Mon 28 - Thu 31 October	The Seventeenth-Century String Band	19/354	51

NOVEMBER			
Fri 1 - Sun 3 November	String Quartets with the Coull (2 night option)	19/20L	18
Fri 1 - Mon 4 November	String Quartets with the Coull (3 night option)	19/355	18
Mon 4 - Thu 7 November	Sarah Francis' Piano and Wind Course	19/356	33
Mon 11 - Wed 13 November	The Sounds of Proper Posture	19/20M	63
Mon 11 - Thu 14 November	Speed Dating for Strings and Piano	19/357	18
Mon 11 - Thu 14 November	Harpichord Accompaniment: Figuring it Out	19/358	53
Fri 15 - Sun 17 November	Wind Ensembles with the London Myriad (2 night option)	19/20N	34
Fri 15 - Mon 18 November	Wind Ensembles with the London Myriad (3 night option)	19/359	34
Fri 15 - Sun 17 November	The Enchantress of Seville with Joglearesa	19/20P	53
Fri 15 - Sun 17 November	Arranging and Orchestration	19/20Q	61
Mon 18 - Thu 21 November	Cello Workshop with Julian Metzger	19/360	19
Mon 18 - Thu 21 November	The Complete Flautist	19/361	34
Mon 18 - Thu 21 November	Quintessential Clarinets	19/362	35
Mon 18 - Thu 21 November	Violin Workshop with Madeleine Mitchell	19/363	20
Fri 22 - Sun 24 November	Consorting Viols (2 night option)	19/20R	53
Thu 21 - Sun 24 November	Consorting Viols (3 night option)	19/364	53
Mon 25 - Wed 27 November	The Benslow Klezmer Orchestra	19/20S	59
Mon 25 - Wed 27 November	Introduction to Wind Chamber Music	19/20T	35
Mon 25 - Wed 27 November	Leading from Behind: A course for chamber music groups with piano	19/20U	37
Fri 29 November - Sun 1 December	String and Piano Ensembles with Nigel Clayton and the Bingham (2 night option)	19/20V	21
Fri 29 November - Mon 2 December	String and Piano Ensembles with Nigel Clayton and the Bingham (3 night option)	19/365	21
DECEMBER			
Mon 2 - Thu 5 December	Group Quartets with the Tedesca	19/366	21
Fri 6 - Sun 8 December	English and American Song	19/20W	45
Fri 6 - Sun 8 December	Winter Saxes	19/20X	35
Fri 6 - Sun 8 December	Composing with Andrew Toovey	19/20Y	61
Fri 6 - Sun 8 December	A Victorian Christmas Weekend	19/20Z	37

STRING AND PIANO CHAMBER MUSIC

Mon 1 - Thu 4 July

Tutors: Simon Callaghan, Jamie Campbell

STANDARD: UPPER INTERMEDIATE, ADVANCED

We are delighted to welcome back Simon and Jamie to Benslow Music for another instalment of their string and piano chamber music course. Drawing on their vast and varied experience as soloists, chamber and orchestral musicians, they will offer specialist coaching on your chosen repertoire and will also aim to introduce lesser-known works for piano and strings. The course is open to individual applicants, however pre-formed ensembles are welcome but should expect to form new groups during the course to provide variety and camaraderie. A list of set works will be available prior to the course but participants are also encouraged to bring their own repertoire to explore in some sessions.

Tutor websites: www.simoncallaghan.com www.jamiecampbellviolin.com

Resident: £400 Non-Resident: £305 Code: 19/336

LATE STARTER STRING ORCHESTRA

Fri 12 - Sun 14 July

Tutor: Sebastian Müller

STANDARD: LOWER INTERMEDIATE

Designed for adult players of at least a confident Grade 3 standard, this course, tutored by the renowned pedagogue Sebastian Müller, assembles a group of violinists, viola players and cellists together as a string orchestra, with parts designed to be challenging to just the right degree. Please note that we cannot accept absolute beginners.

Tutor website: www.sebastianmueller.net

Resident: £280 Non-Resident: £205 Code: 19/270

LATE STARTER VIOLINS

Mon 15 - Thu 18 July

Tutor: Sebastian Müller

STANDARD: ELEMENTARY

Sebastian Müller leads a course designed to improve the confidence and technique of adult violinists of about Grade 1 or Grade 2 standards. We may also accept viola players at Sebastian's discretion. Please note that this is not a course for absolute beginners.

Tutor website: www.sebastianmueller.net

Resident: £400 Non-Resident: £305 Code: 19/337

MARTIN OUTRAM'S VIOLA SUMMER SCHOOL

Mon 29 July - Fri 2 August

Tutors: Martin Outram, Julian Rolton

STANDARD: ADVANCED

This is a course for players at the most advanced level, from conservatoire entry standard upwards. Martin will guide participants in all areas of technique and interpretation in friendly, informal masterclasses and private lessons. In addition to the lessons with Martin, Julian Rolton will also be available to rehearse repertoire of your choice for viola and piano. This is an ideal opportunity to work with a pianist who is a recognised specialist in this repertoire. There might also be ensemble work and open discussion, and there will be a session led by a leading practitioner on baroque performance practice. We encourage participants to perform informally with pianist Julian Rolton on the final day and also to collaborate with other courses on campus out of timetabled hours. Don't forget our automatic 25% reduction (excluding supplements) for under 27s.

Resident: £490 Non-Resident: £385 Code: 19/402

WILLIAM BRUCE'S CELLO SUMMER SCHOOL

Mon 29 July - Fri 2 August

Tutors: William Bruce, Daniel Swain

STANDARD: **ADVANCED**

This course will appeal to both student and adult cellists with a minimum standard of Grade 8. In addition to the core curriculum of the Christopher Bunting Portfolio exercises we will be covering keynote presentations on The Musician as an Athlete, a study of the relationships between the learning and training processes of elite athletes and cellists from a mental and physical view, performance classes, preparation techniques including subliminal practising, ensemble playing and more! Remember under 27s receive a 25% discount on all our basic course fees.

Resident: £490

Non-Resident: £385

Code: 19/404

SUMMER STRING ORCHESTRA WITH ROBERT HODGE



Fri 9 - Mon 12 August

Tutors: Robert Hodge and friends

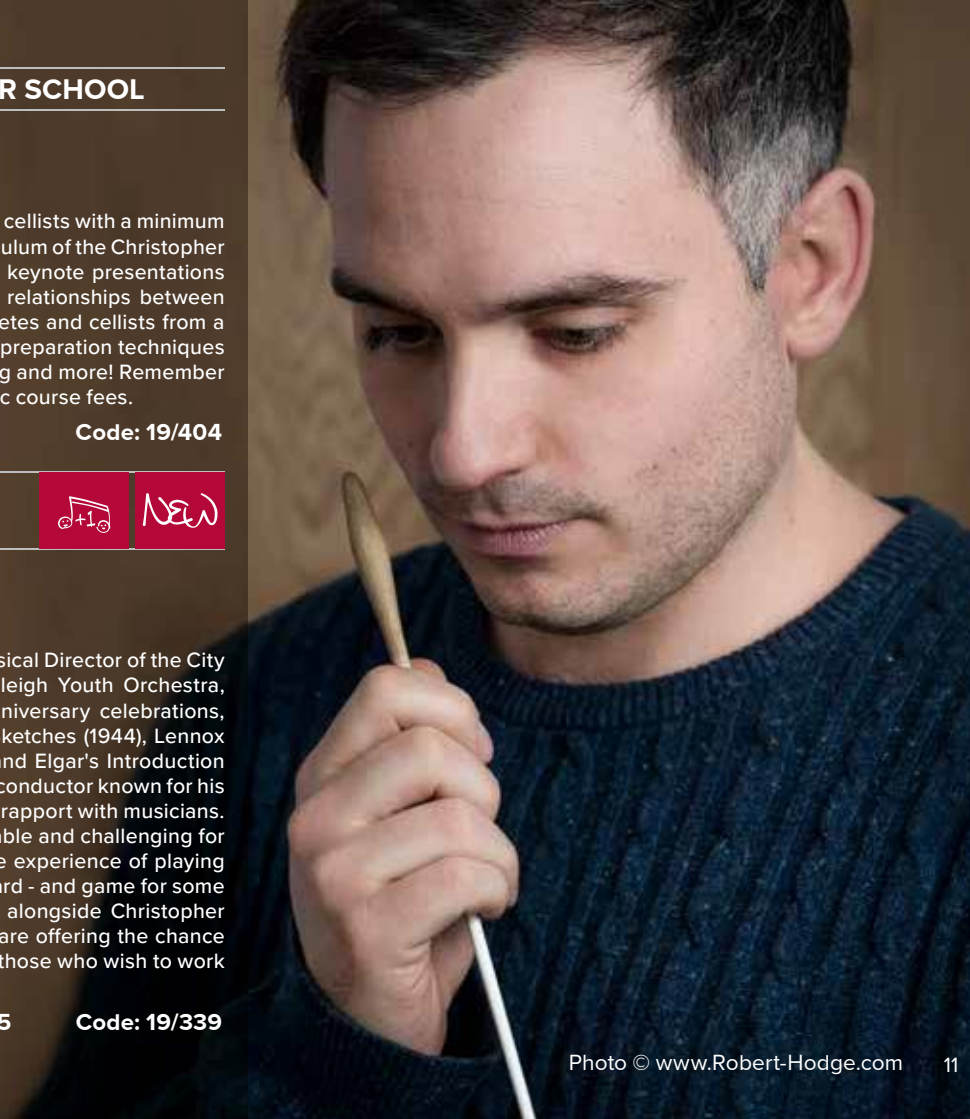
STANDARD: **UPPER INTERMEDIATE, ADVANCED**

We are delighted to welcome Robert Hodge, Musical Director of the City of Cambridge Symphony Orchestra and Stoneleigh Youth Orchestra, to lead this popular course. As part of our anniversary celebrations, this year we will work on Grace Williams' Sea Sketches (1944), Lennox Berkeley's Serenade for Strings, Op 12 (1939) and Elgar's Introduction and Allegro for Strings, Op 47 (1905). Robert is a conductor known for his considerable skill, clarity of technique and good rapport with musicians. He devises exciting programmes that are enjoyable and challenging for players and audiences. Ideally, you'll have some experience of playing in an orchestra and be of at least Grade 5 standard - and game for some exciting challenges! This course will again run alongside Christopher Gayford's Conducting Summer School, and we are offering the chance for collaboration during the afternoon break for those who wish to work with some aspiring conductors.

Resident: £400

Non-Resident: £305

Code: 19/339






HELPING YOU FIND YOUR PERFECT INSTRUMENT

We have now had a shop in central London for 10 years and what keeps us special to our clients is our personal one to one service. We have a large selection of instruments and bows suitable for all levels of player from students and amateurs to orchestral players and soloists. Please call me direct on +44 (0)7905344220 me with your requirements and I will personally be involved in your search!

Our Current Examples in Stock Include: Violins by GB Guadagnini, Gagliano, JB Vuillaume, E Ceruti, V Postiglione, L Bisiach, C Candi & G Pedrazzini. Violas by G Rocca, G Dall'Aglio, G Rivolta, Capicchioni, Carletti, Sderci. Cellos by G Antoniazzi, Capicchioni, Gilkes, Panormo & Fredi. Bows by Simon, Henry, Sartory & Fétique.

 **BISHOP** instruments & bows

2 Hinde Street, London W1U 2AZ |  Bond Street | Mon to Fri 10am - 5pm (other times by appointment)
Tel: +44(0)207 4875682 Email: sean@bishopstrings.com Web: www.bishopstrings.com

CARLOS BONELL'S GUITAR SUMMER SCHOOL

Fri 9 - Mon 12 August

Tutor: Carlos Bonell

STANDARD: UPPER INTERMEDIATE, ADVANCED

Now a regular in our programme, the ever popular Carlos Bonell returns to Benslow Music with a course aimed at guitarists of upper intermediate standard upwards (approximately Grade 6 and beyond). The deeply experienced Carlos, known the world over for his concert work as well as his teaching, takes charge, offering no more than ten classical guitarists the benefits of his wisdom and, of course, heaps of friendly encouragement.

Tutor website: www.carlosbonell.com

Resident: £400

Non-Resident: £305

Code: 19/341

ELEMENTARY STRINGS

Fri 16 - Sun 18 August

Tutors: Janet Hicks, Willie Hicks

STANDARD: ELEMENTARY

This friendly course is designed to improve beginners' confidence, fluency and musical awareness. Most of the music won't demand more than first position playing and will be in easy keys. This course provides an excellent opportunity for elementary students to experience the joys of playing in full harmony.

Resident: £280

Non-Resident: £205

Code: 19/276

WE OFFER A 25% DISCOUNT ON BASIC COURSE FEES FOR GUESTS UNDER 27 ON 1 JANUARY 2019

STRING QUARTETS WITH THE WIHAN

Fri 30 August - Sun 1 September

Tutors: Members of the Wihan String Quartet

STANDARD: UPPER INTERMEDIATE, ADVANCED

We are once again delighted to welcome from Prague the wonderful Wihan Quartet. As usual this course is open to pre-formed string quartets, all of whom will benefit enormously from the wisdoms that these great Czech musicians bring to their interpretations. The course fee also includes a ticket to their concert on Friday 30 August. Please note that any quartets wishing to arrange a pre-course playing room on the first day must contact us prior to the course to avoid disappointment.

Tutor website: www.wihanquartet.co.uk

Resident: £290

Non-Resident: £215

Code: 19/281

THE BENSLOW MANDOLIN WEEKEND

Fri 30 August - Sun 1 September

Tutor: Matt Norman

STANDARD: LOWER/UPPER INTERMEDIATE, ADVANCED

Back by popular demand, Matt Norman returns with this relaxed, fun weekend focusing on the mandolin and mandolin family - mandolas, mandocello, bouzouki etc. The weekend will include masterclasses on technique and the opportunity to play in ensembles. There will also be interesting information on the history of the mandolin and a performance given by your tutor. Matt is a fine mandolinist in folk and classical styles as well as being an experienced teacher, workshop leader and conductor. He has a relaxed teaching style that puts people at their ease whilst getting the best from each player. This course will suit anyone who can already play the mandolin, other mandolin family instruments are welcome but please mention when booking so suitable music can be provided. It will be necessary to read music and the music will be sent out in advance.

Tutor website: www.mattnorman.org

Resident: £280

Non-Resident: £205

Code: 19/282

SUSANNE STANZELEIT'S VIOLIN SUMMER SCHOOL

Sun 1 - Thu 5 September

Tutors: Susanne Stanzeleit, John Thwaites

STANDARD: ADVANCED

Violinist Susanne Stanzeleit returns to Benslow Music for her Violin Summer School, coaching up to ten students from conservatoire entry standard upwards in repertoire, technique and interpretation in a masterclass setting. Susanne will offer the opportunity for discussion, while there will also be workshops and a final informal concert given by participants. Don't forget that for under 27s our automatic 25% reduction on the price of the course (excluding room supplements) applies.

Resident: £490 Non-Resident: £385 Code: 19/408

LATE STARTER CELLO WEEKEND WITH JENNY CURTIS

Fri 6 - Sun 8 September

Tutor: Jenny Curtis

STANDARD: ELEMENTARY, LOWER INTERMEDIATE

This is a course specifically for cellists who are late starters or still early in their learning of the cello and would like to grow in confidence. We will play cello ensemble music together, exploring the challenges of playing in groups and discussing the techniques of playing the cello. You will be sent the music we will play during the weekend in advance so you can feel well prepared for the course.

Resident: £280 Non-Resident: £205 Code: 19/285

FOUNDATION STRING CHAMBER MUSIC



Mon 9 - Thu 12 September

Tutors: Janet Hicks and friends

STANDARD: LOWER/UPPER INTERMEDIATE

On this popular mid-week course we will be concentrating on relatively easy chamber music repertoire played en-masse during the evenings and in small chamber groups during the daytime. There will normally be set repertoire available in advance, but participants will also be encouraged to explore chamber music of their own choice. The course may also include sectional practice.

Resident: £400 Non-Resident: £305 Code: 19/344

VIOLA DAY WITH RICHARD MUNCEY

Sun 15 September

Tutor: Richard Muncey

STANDARD: LOWER/UPPER INTERMEDIATE, ADVANCED

Richard was a founder member of the Guadagnini Quartet, who were resident at Lancaster University and The Music Group of Manchester, a successful piano and strings ensemble. He is currently the violist with the Tedesca Quartet. The day will be a gentle exploration of a couple of Bach's Cello Suite movements (which will be sent out to participants in advance) as well opportunities for some ensemble playing and for questions and answers about perennial problems such as tone production, shifting, vibrato, off the string playing and sight reading strategies. We begin at 10am, break for lunch (included in the price) at 1pm and end no later than 5pm.

Fee: £75 Code: 19/114

STRING AND PIANO ENSEMBLES WITH THE PRIMROSE QUARTET

Fri 20 - Sun 22 September

Tutors: Members of the Primrose Piano Quartet

STANDARD: UPPER INTERMEDIATE, ADVANCED

We are delighted to welcome back the Primrose Piano Quartet, featuring Benslow Music regulars Susanne Stanzeleit, Dorothea Vogel, Andrew Fuller and John Thwaites. This flexible course is open to pre-formed string or string and piano groups from trios upwards (individuals welcome if we can match you with others) for conventional coaching and/or working as an expanded group with a Primrose member. Duos can be accommodated on request. The fee includes entry to the concert on the first night of the course and please remember that any groups wishing to arrive and play before supper will need to book a pre-course playing room to avoid disappointment.

Tutor website: www.primrosepianoquartet.org.uk

Resident: £290 Non-Resident: £215 Code: 19/290

DOUBLE BASS EXTRAVAGANZA



Mon 23 - Wed 25 September

Tutor: Caroline Emery

STANDARD: ELEMENTARY, LOWER/UPPER INTERMEDIATE, ADVANCED

Caroline Emery, Professor of Double Bass at the Royal College of Music, offers tips and encouragement to players of any standard on this brand new course featuring ensemble playing, practical workshops and the chance for individual feedback. Having an international reputation as a teacher of all age groups, her contribution to the double bass world is unique. Group technique classes are also a favourite of Caroline's and can be for different levels exploring helpful concepts to aid ease of playing. A course not to be missed!

Resident: £280 Non-Resident: £205 Code: 19/291

FIDDLE MUSIC OF SCOTLAND AND IRELAND

Fri 27 - Sun 29 September

Tutor: Pete Cooper

STANDARD: LOWER/UPPER INTERMEDIATE, ADVANCED

Resident: £280 Non-Resident: £205 Code: 19/293

FOR COURSE DESCRIPTION SEE PAGE 58

THE CLARSACH COURSE

Fri 27 - Sun 29 September

Tutors: Keziah Thomas, Rachel Hair

STANDARD: ELEMENTARY, LOWER/UPPER INTERMEDIATE, ADVANCED

Resident: £280 Non-Resident: £205 Code: 19/294

FOR COURSE DESCRIPTION SEE PAGE 59

STRING QUARTETS WITH THE FITZWILLIAM

Fri 4 - Sun 6 October

Tutors: Members of the Fitzwilliam String Quartet

STANDARD: UPPER INTERMEDIATE, ADVANCED

The outstanding Fitzwilliam Quartet return to Benslow Music to deliver another of their excellent courses. Once again we welcome applications from pre-formed string quartets, each of which will receive friendly, individually tailored tutoring from each member of the quartet. There's also a public recital which takes place on the Friday at 8pm and entry is included as part of the course package.

Tutor website: www.fitzwilliamquartet.com

Resident: £290 Non-Resident: £215 Code: 19/297



BRIDGEWOOD & NEITZERT

*Dealers, Makers and Repairers of good modern and baroque violins,
viola, cellos, basses & bows*

Expertise led by a passion for sound

Fine selection of instruments and bows
Baroque and Classical period Instruments

Repairs and conversions

Tonal adjustments

Bow rehairing

Same day string mail order service

Advice, expertise and valuations.

Bridgewood & Neitzert

146 Stoke Newington Church Street, London N16 0JU

Phone 020 7249 9398

email: bridgewoodandneitzert@gmail.com

www.bridgewoodandneitzert.london

GROUP QUARTETS WITH JONATHAN TROUT

Mon 7 - Thu 10 October

Tutor: Jonathan Trout

STANDARD: UPPER INTERMEDIATE, ADVANCED

Jonathan Trout leads another of our popular Group Quartet courses, designed for those who are reluctant to tackle the string quartet repertoire one to a part or who just enjoy playing the repertoire en-masse, as if a string orchestra. We'd like you to be of at least Grade 6 standard. We'll work with Jonathan's usual thoroughness on Beethoven's String Quartet in B flat major, Op 18 No 6 and Dvořák's String Quartet No 12 in F major, Op 96, "American". Please note that you need to bring your own music and we'd like you to number the bars yourself before you arrive. Start with the first complete bar and ignore "first time only" repeat bars in your calculations.

Tutor website: www.jonathantrout.co.uk

Resident: £400

Non-Resident: £305

Code: 19/350

INTERMEDIATE STRINGS

Fri 18 - Sun 20 October

Tutors: Janet Hicks, Willie Hicks

STANDARD: LOWER/UPPER INTERMEDIATE

This course is designed as a progression from Elementary Strings, and aims to further the experience and enjoyment of music-making in an ensemble at an intermediate level (approx. Grade 3 - 5). Minimal experience of shifting could be an advantage, and the repertoire, which is available for individual practice in advance of the course, may explore keys containing up to three sharps or flats. Please note that on this course we will be playing all together all of the time, with the possible exception of sectional rehearsals if appropriate.

Resident: £280

Non-Resident: £205

Code: 19/20E

LATE STARTER STRING ORCHESTRA

Mon 21 - Wed 23 October

Tutor: Sebastian Müller

STANDARD: LOWER INTERMEDIATE

Designed for adult players of at least a confident Grade 3 standard, this course, back by popular demand and tutored by the renowned pedagogue Sebastian Müller, assembles a group of violinists, viola players and cellists together as a string orchestra, with parts designed to be challenging to just the right degree. Please note that we cannot accept absolute beginners.

Tutor website: www.sebastianmueller.net

Resident: £280 Non-Resident: £205 Code: 19/20F

STRING ORCHESTRA PLUS

Fri 25 - Sun 27 October

Tutors: Nic Fallowfield, Richard Muncey

STANDARD: UPPER INTERMEDIATE, ADVANCED

Resident: £280 Non-Resident: £205 Code: 19/20J

FOR COURSE DESCRIPTION SEE PAGE 37

“ Very helpful comments.
Lovely experience to
play with generous
professionals.”

UKULELE ENSEMBLE



Fri 25 - Sun 27 October

Tutor: Samantha Muir

STANDARD: LOWER/UPPER INTERMEDIATE, ADVANCED

This brand new course will focus on instrumental playing (not strumming and singing) and is suitable for intermediate to advanced players. Ability to read tab or notation is essential. Music will be for ukuleles with high G C E A tuning. If you play with low G tuning, or play a baritone ukulele tuned D G B E, and would like to attend please tell us in advance. The main emphasis will be on playing together as a ukulele ensemble. Arrangements will include Renaissance, Baroque and Classical pieces as well as folk and pop tunes. There will also be sessions on scales and arpeggios, arranging and composing, playing in campanela style and basic theory. Sam will give a short presentation on the history of the ukulele and its connection with the machete and rajão of Madeira. An informal masterclass will provide an opportunity for participants to perform an instrumental solo they have prepared in advance and receive feedback from Sam. The 'open mic' sessions in the evenings will be a chance to perform a piece or song of your own choice. The course will end with a performance of the pieces you have learnt over the weekend.

Tutor website: www.samanthamuir.com

Resident: £280 Non-Resident: £205 Code: 19/20K

CELLO ORCHESTRA

Mon 28 - Thu 31 October

Tutor: Jenny Curtis

STANDARD: LOWER/UPPER INTERMEDIATE, ADVANCED

Jenny Curtis again leads cellists in works transcribed or originally written for cellos in anything from three to eight parts. There'll be the usual gentle encouragement and enjoyment, and we'll work hard together in order to improve technique and gain insight into issues of interpretation. We'll tell you about any music that we'd like you to study in advance, and we advise you to apply as early as possible so that you arrive well prepared.

Resident: £400 Non-Resident: £305 Code: 19/353

STRING QUARTETS WITH THE COULL

2 NIGHT OPTION

Fri 1 - Sun 3 November

3 NIGHT OPTION

Fri 1 - Mon 4 November

Tutors: Members of the Coull String Quartet

STANDARD: UPPER INTERMEDIATE, ADVANCED

The ever popular Coull Quartet return to Benslow Music to offer ten pre-formed string quartets their usual expert advice and encouragement. Quartets are free to bring along any repertoire they choose and the course also includes a ticket to their concert on Friday 1 November (when the winning pieces of our 2019 Young Composers Competition will be premiered). Please note that any quartets wishing to arrange a pre-course playing room between 2.30pm - 6.30pm on the first day must contact us prior to the course to avoid disappointment.

Tutor website: www.coullquartet.com

2 NIGHT OPTION

Resident: £290 Non-Resident: £215 Code: 19/20L

3 NIGHT OPTION

Resident: £410 Non-Resident: £315 Code: 19/355

SPEED DATING FOR STRINGS AND PIANO

Mon 11 - Thu 14 November

Tutors: Nic Fallowfield, Jenny Curtis

STANDARD: ADVANCED

Now an established part of our programme, this course is designed to serve those musicians who seek their perfect musical partners! Nearer to the time we'll be suggesting a few works to look at if you can before you arrive - just for purposes of familiarisation - and once we know who is coming we'll draw up a timetable of hour-long sessions, guaranteeing that you will never play with the same combination of people twice. We can also accept one or two good pianists so that we can add perhaps the odd piano trio, quartet or quintet into the mix. Participants should be of an advanced standard with strong sight-reading skills in order to cope with the variety of repertoire we will be covering.

Tutor website: www.fallowfield.org

Resident: £400 Non-Resident: £305 Code: 19/357

“ Jenny was a fantastic tutor. Very reassuring and encouraging. She provided a safe space where it was OK to make mistakes so that you could learn from them and improve.”



“ Benslow Music have developed a very impressive range of courses beyond my imagination!”

CELLO WORKSHOP WITH JULIAN METZGER

NEW

Mon 18 - Thu 21 November

Tutors: Julian Metzger, Paul Turner

STANDARD: UPPER INTERMEDIATE, ADVANCED

The charismatic cellist Julian Metzger is often praised for giving both technically and musically exciting performances. We are delighted to offer this brand new course focusing on cello repertoire. Julian will be joined by pianist Paul Turner, recipient of the Queen's Commendation for Excellence and the Peter Pears Accompaniment Prize, and will be working on all issues of repertoire, technique and interpretation in a classroom format. Please bring along a few pieces of your own choosing to work on during the week.

Resident: £400

Non-Resident: £305

Code: 19/360

STRINGED INSTRUMENTS IN MILTON KEYNES

THE
SOUND OF VIOLINS

Marco Matathia

REPAIRING | RESTORING | BUYING | SELLING

GOOD SELECTION OF FRENCH BOWS | HIGH QUALITY INSTRUMENTS

CONSULTANT AND LUTHIER FOR
BENSLOW INSTRUMENT LOAN SCHEME



MOB 07950508813 TEL +44 (0)1462 420748

M.MATATHIA.VIOLIN@HOTMAIL.CO.UK

WWW.THE-SOUNDOFVIOLINS.CO.UK

VIOLIN WORKSHOP WITH MADELEINE MITCHELL



Mon 18 - Thu 21 November

Tutors: Madeleine Mitchell, Nigel Clayton

STANDARD: UPPER INTERMEDIATE, ADVANCED

We are delighted to welcome Madeleine Mitchell, "one of Britain's liveliest musical forces and foremost violinists" for this new course focusing on violin repertoire. She will be joined by Benslow Music favourite Nigel Clayton and will be working on all issues of repertoire, technique and interpretation in a classroom format. Please bring along a few pieces of your own choosing to work on during the week.

Tutor website: www.madeleinemitchell.com

Resident: £400

Non-Resident: £305

Code: 19/363

**MARCO MATATHIA, LUTHIER, IS AVAILABLE AT
BENSLOW MUSIC ON MONDAYS AND TUESDAYS FOR
HELP AND ADVICE. EMAIL FOR AN APPOINTMENT**

STRING AND PIANO ENSEMBLES WITH NIGEL CLAYTON AND THE BINGHAM

2 NIGHT OPTION

Fri 29 November - Sun 1 December

3 NIGHT OPTION

Fri 29 November - Mon 2 December

Tutors: Members of the Bingham String Quartet, Nigel Clayton

STANDARD: UPPER INTERMEDIATE, ADVANCED

Whether you come as a string quartet or a piano quintet (or piano trio, or string sextet), this all-embracing chamber music course taught by the Bingham Quartet and pianist Nigel Clayton offers in-depth help with the repertoire you bring as our experienced, ever-affable tutors share their skills and imaginations with you. This extremely popular course is available in two sizes, covering a three-night stay or a two-night stay, and entry to the public concert on Friday at 8pm is included in the course fee.

Tutor website: www.binghamquartet.net

2 NIGHT OPTION

Resident: £290 Non-Resident: £215 Code: 19/20V

3 NIGHT OPTION

Resident: £410 Non-Resident: £315 Code: 19/365

GROUP QUARTETS WITH THE TEDESCA

Mon 2 - Thu 5 December

Tutors: Nic Fallowfield, Jenny Curtis, Richard Muncey, Clare Bhabra

STANDARD: UPPER INTERMEDIATE, ADVANCED

Nic Fallowfield and his colleagues in the Tedesca Quartet have brought an innovative teaching approach to our famous Group Quartets courses, and previous participants have enthusiastically attested to the enjoyment and benefits gained from that. Course members play in a large-scale quartet formation with the tutors coaching from within the group, encouraging maximum participation in discussions of musical and technical matters and thus enabling everyone to be actively involved in determining how the set works are played. This time we will be working on Dvořák's Cypresses (Nos 2, 5 and 12) and Beethoven's String Quartet in E minor Op 59 No 2, which will be played by the Tedesca in a public concert on the Wednesday evening, which is included in the course fee.

Tutor website: www.tedesca.co.uk

Resident: £410 Non-Resident: £315 Code: 19/366

“ The course had a relaxed and encouraging atmosphere and it was noticeable how people blossomed and improved as the course progressed.”

250th
Celebrating
BENSLWMUSIC
COURSES AND CONCERTS

Howarth *of* London

Woodwind Specialists

since 1948

31 Chiltern St, London W1U 7PN

sales@howarth.uk.com +44 (0)20 7935 2407

howarth.uk.com

SUMMER SAXES

Mon 1 - Thu 4 July

Tutors: Gerard McChrystal and friends

STANDARD: LOWER/UPPER INTERMEDIATE, ADVANCED

On Gerard's popular course you'll play in ensembles ranging from quartets to a whole sax choir, exploring a wide range of music that will be provided. No previous experience of ensemble playing is necessary, but participants must be competent sight readers. Gerard is a hugely experienced performer and educator, and you'll benefit from ensemble coaching, performances and technique classes that cover all aspects of playing the saxophone in a friendly and supportive atmosphere. Please let us know what size(s) of instrument you intend to bring when you apply. If you have any doubts about being of a suitable level then Benslow Music will be pleased to put the tutors in touch with you. The basis level of playing for this course is around Grade 5.

Tutor website: www.saxsaxsax.com

Resident: £400

Non-Resident: £305

Code: 19/335

AN INTRODUCTION TO WIND CHAMBER MUSIC

Fri 12 - Sun 14 July

Tutors: Tricia Melville-Mason, Trona Melville-Mason

STANDARD: LOWER INTERMEDIATE

Intended for players of flute, oboe, clarinet and bassoon, this course provides opportunities to enjoy making music in large groups and smaller, one-to-a-part ensembles. Repertoire will be a mixture of classical and traditional pieces, specially arranged to help players develop confidence in holding an independent musical line. Players should be approximately Grade 3 - 5 standard and will be expected to cope with a certain amount of sight-reading. Be prepared for a light-hearted approach - award-winning tutors Tricia and Trona believe that a relaxed, happy atmosphere promotes effective learning. Practice copies for some of the large group material will be made available on request.

Resident: £280

Non-Resident: £205

Code: 19/272

THE BENSLOW CONCERT BAND

Fri 2 - Sun 4 August

Tutors: Les Lake, John Elliott

STANDARD: UPPER INTERMEDIATE, ADVANCED

On this course you can enjoy a weekend of varied band music in a relaxed atmosphere, exploring repertoire old and new and getting to grips with issues like balance and dynamics. We welcome woodwind, saxophone, brass and percussionists on this infectiously enjoyable course. There might be some sectional work, but there will certainly be a celebratory play-through of what we've learned on the final day. Brush up your sight-reading and enjoy a vast range of repertoire from 'Teddy Bears' to Hindemith.

Resident: £280

Non-Resident: £205

Code: 19/273

“Your embouchure will feel like a superhero afterwards, and it's friendly and good fun.”

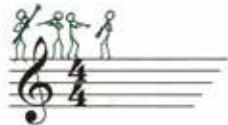


www.woodwindcolours.com

PDF sheet music for
small mixed woodwind ensembles

Easy – Improver – Intermediate

Make music with friends!



Classical, traditional and original material,
presented in sets of several assorted pieces

PHILIPPA DAVIES' FLUTE SUMMER SCHOOL

Mon 5 - Fri 9 August

Tutors: Philippa Davies, Jan Willem Nelleke

STANDARD: ADVANCED

Philippa Davies and Jan Willem Nelleke return in 2019 to lead another popular Flute Summer School. Philippa is known world-wide as one of the finest solo and chamber flautists currently performing and plays in the Nash Ensemble, London Winds, London Sinfonietta as well as teaching at the Guildhall. This is a well-established friendly but demanding summer school for advanced students - post Grade 8/Conservatoire entry level - with the aim of increasing musical freedom, imagination, awareness and expression in solo, chamber and orchestral repertoire. Every aspect of technique will be worked upon in order to free up musical expression with particular attention paid to tone, articulation, breathing, improvisation skills and how freely the body moves to improve performance - Philippa is a licensed Andover Educator in Body Mapping. Please prepare three or four varied pieces. A ticket is included to the public concert given by Philippa and Jan Willem on Wednesday 7 August. This year we will also spend some time working closely with the singers on the concurrent course. There will be a combined masterclass on the Thursday evening taken by Philippa and singer tutor Sarah Leonard and a joint informal concert by course members on the last afternoon. Don't forget the 25% discount (excluding room supplements) for under 27s.

Resident: £490

Non-Resident: £385

Code: 19/407

**WE OFFER A 25% DISCOUNT ON BASIC COURSE
FEES FOR GUESTS UNDER 27 ON 1 JANUARY 2019**

ELEMENTARY WINDS

Fri 16 - Sun 18 August

Tutors: Tricia Melville-Mason, Trona Melville-Mason

STANDARD: ELEMENTARY, LOWER INTERMEDIATE

An opportunity for relative beginners on flute, oboe, clarinet or bassoon to enjoy playing together in a small, mixed group. Music will include arrangements of classical and traditional pieces, carefully tailored to the experience and ability level of the individual participants. Award-winning tutors Tricia and Trona specialise in working with adult learners/returners and are known for taking a light-hearted approach that boosts players' confidence and stimulates achievement. The course is aimed primarily at players from approximately Grade 1 to Grade 3 standard.

Tutor website: www.blowandblast.co.uk

Resident: £280

Non-Resident: £205

Code: 19/277

“ Intense coaching, delightful concert, plenty of time to practise and socialise, good food, comfortable bedroom and attractive garden.”

SUMMER WINDFEST

Sun 18 - Fri 23 August

Tutors: Colin Bradbury, Jean McCreery, Martin Gatt and friends

STANDARD: UPPER INTERMEDIATE, ADVANCED

Our very popular Summer WindFest returns led by Colin Bradbury, doyen of British clarinetists, Martin Gatt, bassoonist extraordinaire, baroque specialist Jean McCreery, and guest tutors for flute, horn, oboe and piano. You'll have the opportunity to play in groups large and small, to encounter a wide variety of repertoire, and to take part in the traditional last night concert given by participants and tutors. Colin also gives a slightly less informal recital with his tutor colleagues on the final afternoon. You'll need to be at least of confident Upper Intermediate standard (see Guide to Standards on p.6) to get the most out of this course, and the course is also suitable for the most advanced players. We will have over 30 wind players on the course and the tutors will carefully match participants into groups of similar standard - there will also be opportunity for particular groups to stay together for at least part of the time. We are looking for flutes, oboes, clarinets, bassoons, French horns and pianists. All course members need to have strong, confident sight reading abilities; some experience of ensemble playing would be a great advantage. Part time attendance is welcomed, although we may need to delay confirmation until nearer the time. In order to ensure a good balance of instruments, some applicants may be asked to wait a little before their place can be confirmed.

Resident: £585

Non-Resident: £460

Code: 19/504



BRASS WORKSHOP WITH BELLA TROMBA'S JO HARRIS

NEW

Fri 23 - Sun 25 August

Tutor: Jo Harris

STANDARD: LOWER/UPPER INTERMEDIATE, ADVANCED

Tune into your love of melody and deepen your passion for performing. A founding member of chamber group Bella Tromba, Jo has a wealth of experience playing demanding repertoire in pressured situations. She brings her number one aim, to enjoy music in all circumstances, to Benslow Music for a brand new course for all brass players. There will be an accompanist on hand to play for you, sessions on technique and performance anxiety and a chance to perform a solo work in an informal concert. To take part all you need is a sense of fun, a willingness to try something new and a piece or two to master.

Tutor website: www.bellatromba.com

Resident: £280

Non-Resident: £205

Code: 19/280

THE DOUBLE REED DAY!

NEW

Sat 24 August

Tutors: Philip Haworth, Ashley Myall

STANDARD: ELEMENTARY, LOWER/UPPER INTERMEDIATE, ADVANCED

A fun day of all things double reed related: exciting warm up techniques, reed adjustments for all levels, solo piece performance classes and ensemble playing. Both Philip and Ashley have been teaching chamber music at the Royal Birmingham Conservatoire for the last 5 years along with many other courses and students from complete beginners to University level students. We begin at 10am, break for lunch (included in the price) at 1pm and end no later than 5pm.

Fee: £75

Code: 19/112

CLARINET WEEKEND

IN ASSOCIATION WITH EVERYONE MATTERS

Fri 6 - Sun 8 September

Tutors: David Campbell, Margaret Archibald, Ian Scott, John Flinders

STANDARD: LOWER/UPPER INTERMEDIATE, ADVANCED

Clarinetists David Campbell, Margaret Archibald and Ian Scott return for a special clarinet celebration of Benslow Music's 90th anniversary, joined once again by pianist John Flinders. The Saturday afternoon masterclass with David and John will give course members a platform to share performances of a movement from Mozart's Concerto in A K622 or Horowitz's Sonatina; the parallel performance workshop with Margaret and Ian will offer less confident performers the chance to study Tartini-Jacob's Concertino or a movement from Finzi's Bagatelles in open forum. Clarinet choir sessions will focus on one work for which scanned practice parts will be sent in advance. Small groups will be formed with some advance planning of repertoire to enable players to prepare. John Flinders will see every course member for a short rehearsal of a piece with piano accompaniment; players are invited to suggest works. Course members will share cars in order to offer the final informal concert on Sunday afternoon to an audience at Symonds House Leonard Cheshire Disability in Hitchin. The course will finish at approximately 5pm. The tutors' public recital on the Saturday, for which all participants receive entry as part of the course fee, will be a celebration of clarinet repertoire for duo, trio and works with piano.

Tutor website: www.campbelldavid.com

Resident: £290

Non-Resident: £215

Code: 19/284



*The place for
all things
woodwind
& brass*

REEDS
DIRECT
CAMBRIDGE

tel: 01223 576391 • fax: 01223 576231
freephone: 0800 0969 440
web: www.reeds-direct.co.uk
e-mail: shop@reeds-direct.co.uk

WOODWIND & REED

Retail and Repair of Wind and Brass Instruments

106 Russell Street, Cambridge CB2 1HU
tel: 01223 500442
web: www.wwr.co.uk
e-mail: shop@wwr.co.uk

STEPHANIE REEVE'S WOODWIND BAND

Mon 9 - Wed 11 September

Tutors: Stephanie Reeve, George Sleightholme

STANDARD: LOWER/UPPER INTERMEDIATE

This course, led by the infectiously enthusiastic Stephanie Reeve and George Sleightholme, gives intermediate players the opportunity to develop ensemble and sight-reading skills as well as providing assistance with basic technical skills such as breathing, posture and musicianship. The main focus is the large ensemble, which works on four-part arrangements and original works. The varied repertoire covers everything from Renaissance to the present day. Players of flute, oboe, clarinet, bassoon, bass clarinet and any saxophone are welcome. There are also parts for French horn. There will be some opportunity for chamber music playing so players are encouraged to bring their own music.

Resident: £280

Non-Resident: £205

Code: 19/286

FLUTE DAY WITH ELISABETH HOBBS

Sat 14 September

Tutor: Elisabeth Hobbs

STANDARD: ELEMENTARY, LOWER/UPPER INTERMEDIATE, ADVANCED

The popular Elisabeth Hobbs offers tips and encouragement to flautists of any standard on this day course featuring flute choir, practical workshops and the chance for individual feedback. She's expert at pinpointing problems and offering efficient solutions and achieves amazing results with the minimum of fuss and maximum friendly support. We begin at 10am, break for lunch (included in the price) at 1pm and end no later than 5pm.

Fee: £75

Code: 19/113

RECORDERFEST

IN ASSOCIATION WITH THE SOCIETY OF RECORDER PLAYERS



Fri 13 - Sun 15 September

Tutors: Alyson Lewin, Jean McCreery, Rae Strong

STANDARD: ELEMENTARY, LOWER/UPPER INTERMEDIATE, ADVANCED

Our experienced and enthusiastic team of recorder tutors welcome you to our ever popular 2019 RecorderFest. In this wide-ability course, the tutors will ensure you are placed in a group of an appropriate level, and there may be movement between groups as the course progresses. Those of elementary standard, reasonably proficient at reading music, will benefit from a patient and sympathetic approach. More experienced players will enjoy being stretched in ensemble sessions with an option to explore one-to-a-part work benefiting from relaxed and friendly guidance. Participants at this level should offer at least two instruments and be confident sight-readers. The most advanced players, who must be strong sight readers with good rhythmic skills, have the confidence to work solely on one-to-a-part repertoire, offer all four different instruments (and be able to swap between them with ease) and produce ensemble sound of consistently high quality, will benefit from exacting and highly skilled musical and technical guidance, as always delivered in a supportive manner.

Resident: £280

Non-Resident: £205

Code: 19/287

ELEMENTARY AND INTERMEDIATE SAXES



Mon 16 - Thu 19 September

Tutors: Gerard McChrystal and friends

STANDARD: ELEMENTARY, LOWER INTERMEDIATE

This new course is aimed at saxophonists (Grades 1 - 4) who don't yet feel ready to join our more advanced courses. Gerard will do lots of sight reading on the course. He will give tips on both playing the saxophone and how to become a more confident reader. Music will be provided to suit everyone and there will be both small and large groups. The key to the course is encouragement and confidence with reading.

Resident: £400

Non-Resident: £305

Code: 19/346

RECORDER REVIVAL WITH OONAGH LEE**Mon 7 - Thu 10 October****Tutor: Oonagh Lee****STANDARD: LOWER/UPPER INTERMEDIATE, ADVANCED**

Inspire and inform your playing with this approachable course, featuring recorder music old and new with an enjoyable mix of ensemble and technique sessions. This brand new course aims to build technical proficiency and confidence, and to explore the concept of the recorder as both an ancient and modern instrument. Oonagh Lee was born in Glasgow and completed her studies at the Royal Academy of Music and The Koninklijk Conservatorium Den Haag. Since then Oonagh has become a regular on the historical performance scene as both an oboist and recorder player, performing with ensembles including Dunedin Consort, Orchestra of the 18th Century, Academy of Ancient Music and The Hanover Band.

Resident: £400**Non-Resident: £305****Code: 19/351**

“ The tutor created a wonderfully calm and supportive atmosphere.”



INTERMEDIATE WIND CHAMBER MUSIC

Fri 11 - Sun 13 October

Tutors: Liz Drew and friends

STANDARD: LOWER/UPPER INTERMEDIATE

This course will explore a range of wind repertoire and also arrangements suited to the level of the participants and is designed for individual applicants of a confident Grade 4 and above. Each of the coaches specialise in a different instrument, so between them they cover all bases. The course culminates in an informal play-through on the final afternoon and participants should be willing to mix and match with fellow musicians during the course.

Resident: £280

Non-Resident: £205

Code: 19/299

HARMONIEMUSIK WITH BOXWOOD AND BRASS

Fri 18 - Sun 20 October

Tutors: Emily Worthington, Robert Percival, Martin Lawrence

STANDARD: UPPER INTERMEDIATE, ADVANCED

Explore the wind music of the Classical and early-Romantic period, 1780-1820. Harmoniemusik specialists from Boxwood and Brass will guide you through sextets and octets by Mozart, Beethoven and Krommer as well as historical transcriptions of operatic and symphonic music for 5 to 9 players. The course includes a mix of sight-reading and in-depth work on prepared repertoire. We are looking for oboe, clarinet, bassoon/contrabassoon, horn players (modern or natural) and double bass, of a confident Grade 7 to conservatoire level. Students will leave with a broader knowledge of the repertoire for Harmonie and the ensemble playing skills it requires, including elements of style and performance practice. You will also have the chance to learn about historical wind instruments. Martin Lawrence will lead a workshop for players of natural horn and those interested to try it, as well as a class on dealing with Performance Anxiety and morning Yoga sessions!

Tutor website: www.boxwoodandbrass.co.uk

Resident: £280

Non-Resident: £205

Code: 19/20D

BASSOON EXTRAVAGANZA WITH MARTIN GATT

Mon 21 - Wed 23 October

Tutor: Martin Gatt

STANDARD: LOWER/UPPER INTERMEDIATE, ADVANCED

Join us for a fun course of 'bassoonerie'! We will be developing ensemble and technical skills as we explore a wide variety of material. Some favourites of the solo repertoire will be featured and there will be an opportunity to rehearse these with piano. We are delighted to welcome back Benslow Music regular and bassoonist extraordinaire Martin Gatt to lead this course. Martin is Bassoon Professor at the Royal College of Music and travels regularly to adjudicate, present masterclasses and take part in recitals in China, Hong Kong and Europe.

Resident: £280

Non-Resident: £205

Code: 19/20H

“ Very enjoyable - the tutors were excellent. Clear, encouraging, supportive and informative. Tactful when we made mistakes, always willing to explain and demonstrate.”

IT ALL STARTS WITH A GOOD REED!

32 exciting pages crammed full with everything
Clarinet and Saxophone players will ever need!

From **Lip Balm** to **Ligatures**, **Metronomes** to **Mouthpieces** and **Pad Care** to **Patches**, this eagerly-awaited revamp is now available and is **THE** Clarinet & Saxophone player's must have guide.

Includes an updated '**Finding the Right Reed for You**', six pages of the expanded and indispensable **Clarinet and Saxophone Reed Strength Comparison Charts**, nine pages of illustrated **Reed Brands** and a fantastic new '**RDC Jargon Buster Definitions**' feature.

Reeds Direct Cambridge,
Russell Street, Cambridge CB2 1HU, UK

Website: www.reeds-direct.co.uk

e-mail: shop@reeds-direct.co.uk Fax: 01223 576231

FREE PHONE 0800 0969 440 REEDS DIRECT CAMBRIDGE of 01223 576391

Request your catalogue today

The Easy Way to Buy Clarinet & Saxophone Reeds!

REEDS

DIRECT
CAMBRIDGE

f @WWR&ReedsDirect

FREEPHONE
0800 0969 440

Order online www.reeds-direct.co.uk

ALEXANDER
AW REEDS
BARI
BRAVO
D'ADDARIO
DANIEL'S
FIBRACELL
FRANCOIS LOUIS
GONZALEZ
HARRY HARTMANN
HEMKE
JUNO
LA VOZ
LÉGERE
LEUTHNER
MARCA
MITCHELL LURIE
NEURANTER
PILGERSTORFER
RICO
RIGOTTI
SELMER
STEUER
VANDOREN

OBOE EXTRAVAGANZA: GROWING IN CONFIDENCE

Fri 25 - Sun 27 October

Tutors: Andrew Knights, Ian Clarke

STANDARD: LOWER/UPPER INTERMEDIATE, ADVANCED

Oboist Andrew Knights and pianist Ian Clarke have been running their popular spring course for many years. Although this autumn course is designed for all oboists, it will concentrate on every aspect of basic oboe playing, and will be designed particularly to help the less confident oboist. Andrew and Ian share an enthusiasm for teaching and encouraging oboists at every stage. Andrew brings his experience as a solo and orchestral oboist and Ian his insights as an experienced and sympathetic examiner. Participants will be given much material to take home for their ongoing development; exercises for warming up, developing a good and strong embouchure, exercises to encourage subtle articulation and rich expression, as well as new and carefully selected repertoire. During the course all participants will be encouraged to try these exercises and pieces as a group, and thereby have as much "playing time" as possible. These materials will be available in advance from Andrew's website. All will be able to rehearse as well in individual slots with Ian. Reeds will be discussed, with the possibility of having adjustments made. Participants will have the option of playing in a "masterclass" on the final morning and all will play in ensembles chosen to reinforce technical skills discussed during the weekend. Players who own a cor anglais will be welcome to bring these and use them in the ensembles, as well as learning cor anglais specific skills.

Tutor website: www.andrewknights.org

Resident: £280

Non-Resident: £205

Code: 19/201

SARAH FRANCIS' PIANO AND WIND COURSE

Mon 4 - Thu 7 November

Tutors: Sarah Francis, Robert Codd, Stephen Gutman,
Ian Mitchell

STANDARD: ADVANCED

Once again we welcome the distinguished oboist Sarah Francis for another of her brilliantly organised courses for wind ensembles and pianists, which she tutors with her illustrious colleagues, pianist Stephen Gutman, clarinettist Ian Mitchell and bassoonist Robert Codd. As usual we'll be exploring a wide range of repertoire including works such as Poulenc's Sextet, Saint-Saëns's Caprice for flute, oboe, clarinet and piano, and piano and wind quintets by Mozart and Beethoven. Pre-formed groups, with or without pianists, are encouraged to apply for this course, as are individual pianists and harpsichordists - but please note that there will be mixing and matching for everyone according to repertoire and standards. Pianists should be capable of playing works such as Beethoven's Piano and Wind Quintet with facility, and everyone who comes should be a good sight-reader. Early booking is recommended for pianists because Sarah needs to discuss and settle repertoire with you by mid-September. Because the course needs to be balanced as to participation and standard, woodwind players who apply individually will be carefully matched and incorporated. We ask for at least Grade 8 standard for this selective course, and whilst we do take deposits at the time of booking, in order to ensure optimum participation in the course we may not be able to confirm your place until the end of August.

Resident: £400

Non-Resident: £305

Code: 19/356

WIND ENSEMBLES WITH THE LONDON MYRIAD

2 NIGHT OPTION

Fri 15 - Sun 17 November

3 NIGHT OPTION

Fri 15 - Mon 18 November

Tutors: Members of the London Myriad Ensemble

STANDARD: UPPER INTERMEDIATE, ADVANCED

The London Myriad Ensemble return to Benslow Music with another instalment of their popular course designed specifically for pre-formed wind ensembles. Tutors work intensively with each group on a rotational basis to ensure a broad range of input on your chosen repertoire. The aim of this unique course is to capitalise on the way an established group functions, enabling in-depth exploration of the specific ensemble and rehearsal skills that working ensembles encounter. As always, the Myriads offer some optional extras on top of their committed coaching, also offering useful advice on rehearsal technique and performance issues as well as instrument specific advice where required. Applications are welcomed from any configuration of wind or wind and piano ensembles from trios to dectets. Due to popular demand, we are again offering an optional extra day for those groups who are interested in a longer course. If you have any specific requests relating to the rehearsal room that you are assigned for the course, please don't forget to mention this on booking.

Tutor website: www.londonmyriad.com

2 NIGHT OPTION

Resident: £280 Non-Resident: £205 Code: 19/20N

3 NIGHT OPTION

Resident: £400 Non-Resident: £305 Code: 19/359

THE COMPLETE FLAUTIST



Mon 18 - Thu 21 November

Tutor: Joss Campbell

STANDARD: UPPER INTERMEDIATE, ADVANCED

This course offers flautists an opportunity to improve their flute playing with daily sound and technique workshops, rehearsal opportunities with an experienced accompanist, masterclasses and flute choir ensemble playing. Each day will start with a sound session to improve all aspects of tone production followed by sessions studying techniques such as articulation, posture, breathing, phrasing, vibrato, tuning, dynamics and any specific aspects of technique that you wish specific help with, running parallel with independent accompaniment sessions with an accompanist. The afternoon sessions will be divided between ensemble playing and an open masterclass with the group. Playing in the masterclass is voluntary and the objective of these sessions is to provide a supportive atmosphere to play and discuss technique and interpretation of your chosen repertoire that will be of benefit to both listeners and performers. The evening session will be a chance to relax and enjoy playing together various arrangements from ballet, film and classical genres giving you the opportunity to work on ensemble skills such as tuning, leading, stagecraft and balance, through the enjoyment of ensemble playing, and guide you as to how to rehearse in such groups. Please let us know in advance whether you will be bringing along a piccolo, alto or bass flute to the flute choir sessions so we may plan appropriate repertoire for the ensemble sessions, along with your approximate playing standard. There will be an optional sharing at the end of the course at 2.30pm on the last day, where participants may perform, to friends and family, their solo repertoire from the masterclasses and ensemble repertoire worked on throughout the course.

Resident: £400 Non-Resident: £305 Code: 19/361

QUINTESSENTIAL CLARINETS

Mon 18 - Thu 21 November

Tutors: Anthony Bailey, Daniel King Smith

STANDARD: LOWER/UPPER INTERMEDIATE, ADVANCED

This course, which carefully caters for a wide ability range, aims to develop your solo and ensemble playing both by working through the pieces you bring along and by presenting you with fresh challenges. You will have the chance to work with the course pianist individually on pieces you have previously prepared, and should you want to share your performance with the group then you can, in a supportive, informal ambience. All areas of performance will be addressed, and we'll also look at rehearsal and sight reading techniques, issues common at all levels of playing.

Tutor website: www.anthonyjohnbailey.com

Resident: £400

Non-Resident: £305

Code: 19/362

“ All coaching sessions were excellent: the tutors went into great detail on interpretative issues, and gave very helpful demonstrations on points of technique.”

INTRODUCTION TO WIND CHAMBER MUSIC

Mon 25 - Wed 27 November

Tutors: Tricia Melville-Mason, Trona Melville-Mason

STANDARD: LOWER INTERMEDIATE

Intended for players of flute, oboe, clarinet and bassoon, this course provides an opportunity to enjoy making music in a large group and smaller, one-to-a-part ensembles. Repertoire will be a mixture of classical and traditional pieces, specially arranged to help players develop confidence in holding an independent musical line. Be prepared for a light-hearted approach - award-winning tutors Tricia and Trona believe that a relaxed, happy atmosphere encourages effective learning. Players should be approximately Grade 3 - 5 standard and reasonably comfortable about sight-reading, although practice copies for some of the large group material will be made available on request.

Tutor website: www.blowandblast.co.uk

Resident: £280

Non-Resident: £205

Code: 19/20T

WINTER SAXES

Fri 6 - Sun 8 December

Tutors: Gerard McChrystal and friends

STANDARD: LOWER/UPPER INTERMEDIATE, ADVANCED

Gerard's winter course is always extremely well attended, so book early to avoid disappointment. As usual you'll play in ensembles ranging from quartets to a whole saxophone choir, and there will also be workshops and technique clinics. Although pre-formed quartets are very welcome, no previous experience of ensemble playing is necessary. Music is provided, but you can also bring your own. Please let us know what size(s) of instrument you intend to bring. The basis level of playing for this course is around Grade 5.

Tutor website: www.saxsaxsax.com

Resident: £280

Non-Resident: £205

Code: 19/20X

BAROQUE BUFFET: BAROQUE ON MODERN INSTRUMENTS

Mon 12 - Thu 15 August

Tutors: Julia Bishop, Sophie Middleditch, Julian Perkins

STANDARD: UPPER INTERMEDIATE, ADVANCED

Resident: £400 Non-Resident: £305 Code: 19/342

FOR COURSE DESCRIPTION SEE PAGE 47

MIXED CHAMBER MUSIC

Mon 30 September - Thu 3 October

Tutors: Steve Bingham, Nigel Clayton, Brenda Stewart,
Margaret Archibald

STANDARD: ADVANCED

As usual we seek flute, oboe, clarinet, bassoon and horn players, string players (including double bass) and pianists. Please apply as individuals even if you are bringing along with you a pre-formed group. Balancing this course can be tricky, so please be patient if we have to delay confirmation of your place. You are most welcome to suggest your own repertoire, but what we finally get to play will depend on who comes. In every session the tutors will programme several ensembles tackling both familiar and less well-known repertoire, sometimes with relevant follow-up sessions; therefore strong sight-reading and solid ensemble confidence are required. If you have any queries about your standard please don't hesitate to get in touch.

Tutor website: www.stevebingham.co.uk

Resident: £400 Non-Resident: £305 Code: 19/348

PERFORMING FOR HITCHIN IN ASSOCIATION WITH EVERYONE MATTERS



Mon 14 - Wed 16 October

Tutors: Margaret Archibald, Martin Smith

STANDARD: UPPER INTERMEDIATE, ADVANCED

Everyone Matters in collaboration with Benslow Music has established a network of nursing homes in and around Hitchin that love to have us visit them with live music-making. Care home residents who are too infirm to get out to a theatre or concert hall are offered an interlude of musical entertainment and a chance to chat over refreshments, a little moment of fun that can make a big difference. Clarinettist Margaret Archibald has been leading concerts of this kind since she was invited to set up this aspect of the London Mozart Players' work in 1989, and violinist Martin Smith was one of the first members of the orchestra to embrace this work. The two have collaborated ever since and they are approaching their 30th anniversary of working on projects together as we celebrate our 90th anniversary. This new course welcomes all instrumentalists and singers to take part. The repertoire will be chosen to suit the line-up, and course members share with the tutors the rewarding experience of devising a programme that offers our audiences the highest standard of performance that we can achieve in an intensive rehearsal process.

Tutor website: www.everyone-matters.co.uk

Resident: £280 Non-Resident: £205 Code: 19/20B

“ Intense, interesting,
challenging and
supportive.”

STRING ORCHESTRA PLUS

Fri 25 - Sun 27 October

Tutors: Nic Fallowfield, Richard Muncey

STANDARD: UPPER INTERMEDIATE, ADVANCED

String Orchestra Plus returns in 2019 with Nic Fallowfield and Richard Muncey - colleagues in the Tedesca Quartet and among the most popular Benslow Music tutors. We once again invite players to join them in an exploration of music which seldom gets an outing in amateur orchestras. This time we will be working on Haydn's Symphony No 66 in B flat major and Boccherini's Symphony No 26 in C minor, Op 41. There will also be the opportunity to read-through Haydn's Symphony No 67 in F major on the Saturday evening. We're looking for an orchestra of strings, 2 oboes, 2 bassoons and 2 horns.

Resident: £280

Non-Resident: £205

Code: 19/20J

THE ENCHANTRESS OF SEVILLE WITH JOGLAESA



Fri 15 - Sun 17 November

Tutors: Belinda Sykes and friends

STANDARD: ALL

Resident: £290

Non-Resident: £215

Code: 19/20P

FOR COURSE DESCRIPTION SEE PAGE 53

LEADING FROM BEHIND: A COURSE FOR CHAMBER MUSIC GROUPS WITH PIANO



Mon 25 - Wed 27 November

Tutors: Nigel Clayton, Imma Setiadi

STANDARD: UPPER INTERMEDIATE, ADVANCED

This brand new course invites chamber music groups with piano (from duo to quintet) to study their repertoire and gain musical insights with the guidance of experienced collaborative pianist tutors, who have spent their lives alongside instrumental players. This will give the opportunity to focus more on the musical interpretation rather than the mechanics of the instruments. The course will include group coaching, individual coaching for the pianist, and coaching for the instrumentalists with the tutor at the piano. The course will also include an open workshop, masterclass session, a Q and A session with Prosecco(!), and a final concert. Applications are invited from pre-formed groups with piano (individuals welcome if we can match you with others) and participants are required to send their chosen repertoire prior to the course. Suggestions for repertoire can be provided upon application.

Resident: £280

Non-Resident: £205

Code: 19/20U

A VICTORIAN CHRISTMAS WEEKEND

Fri 6 - Sun 8 December

Tutors: David Sutton-Anderson, Avril Anderson

STANDARD: ALL

This short course, open to singers and instrumentalists of any standard, provides the opportunity of participating in a Victorian Christmas Musical Gathering. We will prepare a programme comprising Victorian carols - both familiar favourites and little known gems - as well as parlour songs and instrumental party pieces. The course will culminate in an informal Victorian Christmas Performance to which you may invite family and friends. You are welcome to bring along a piece of music of your own choice that you feel would be appropriate for such an occasion.

Resident: £280

Non-Resident: £205

Code: 19/20Z

STRING AND PIANO CHAMBER MUSIC

Mon 1 - Thu 4 July

Tutors: Simon Callaghan, Jamie Campbell

STANDARD: UPPER INTERMEDIATE, ADVANCED

Resident: £400 Non-Resident: £305 Code: 19/336

FOR COURSE DESCRIPTION SEE PAGE 10

LATE STARTER PIANO



Fri 12 - Sun 14 July

Tutor: Lucinda Mackworth-Young

STANDARD: BEGINNER, ELEMENTARY, LOWER INTERMEDIATE

With her life-long experience of working with adult learners of all ages and stages, Lucinda specialises in helping everyone achieve their personal goals through a wealth of musical, physical and psychological tips, in a mutually supportive atmosphere. Besides working with piano repertoire of all genres and styles (classical, light, pop, jazz, show time) Lucinda will focus on practice strategies and how to enjoy performing, overcoming anxiety. Lucinda also enjoys teaching everyone how to play spontaneously, on any piano, anytime, anywhere - improvising and accompanying songs (Yes! Everyone can do it!). This course is suitable for beginners, re-starters and more experienced players.

Tutor website: www.lucinda-mackworth-young.co.uk

Resident: £280 Non-Resident: £205 Code: 19/271

WE OFFER A 25% DISCOUNT ON BASIC COURSE FEES FOR GUESTS UNDER 27 ON 1 JANUARY 2019

GRAEME HUMPHREY'S PIANO SUMMER SCHOOL

Mon 29 July - Fri 2 August

Tutor: Graeme Humphrey

STANDARD: ADVANCED

Graeme has been a teacher of piano all his professional life, both at the Royal Academy of Music for thirty-six years from 1974 - 2010, and privately. He has also been very actively involved in festival adjudicating and examining - work which has taken him all over the world. Graeme can accept up to eight advanced pianists of at least conservatoire entry standard on this course, which will focus on technique, interpretation and repertoire. We also encourage ad hoc sessions with students attending concurrent summer schools on campus. It is also possible for students to rehearse and play piano ensemble music during the course.

Resident: £490 Non-Resident: £385 Code: 19/403

ABRSM JAZZ PIANO SYLLABUS FOR PIANO TEACHERS

Fri 2 - Mon 5 August

Tutor: Tim Richards

STANDARD: ADVANCED

As a contributor to the syllabus and jazz examiner since 1999, jazz pianist Tim Richards is the ideal person to run courses that de-mystify the mechanics of playing jazz, in a style that enables it to be passed from teacher to pupil. The course examines the syllabus (Grades 1 - 5) in detail, giving insight into the skills required for candidates and how to teach them. Help will be given with interpretation, improvisation, and the basics of jazz theory and harmony. No previous experience of jazz is required. Participants will also receive a ticket for the concert given by Tim on Friday 2 August.

Tutor website: www.timrichards.ndo.co.uk

Resident: £410 Non-Resident: £315 Code: 19/338

BENSLOW EARLY PIANO SCHOOL: WHAT HUMMEL TELLS US ABOUT MOZART, HAYDN AND BEETHOVEN

NEW

Mon 2 - Wed 4 September

Tutor: Dr Penelope Cave

STANDARD: UPPER INTERMEDIATE, ADVANCED

For this year's historically-informed course on the piano, Dr Cave has chosen to feature Hummel who, as a student of Mozart for two years, a friend of both Haydn and Beethoven, and perhaps the last great piano pedagogue of the Classical period, was lauded in London and Vienna. Hummel strove to pass on the necessary style and technique from which we might now benefit, in both teaching materials and a huge number of compositions for the piano. Our Broadwood square piano will be available for this friendly, practical and informative course on the music of Hummel, Mozart, Haydn and Beethoven.

Resident: £280

Non-Resident: £205

Code: 19/283

“Fantastic tutors. Inspiring, knowledgeable, talented, always polite, kind and encouraging.”

STRING AND PIANO ENSEMBLES WITH THE PRIMROSE QUARTET

Fri 20 - Sun 22 September

Tutors: Members of the Primrose Piano Quartet

STANDARD: UPPER INTERMEDIATE, ADVANCED

Resident: £290

Non-Resident: £215

Code: 19/290

FOR COURSE DESCRIPTION SEE PAGE 15

“ The musical content was very varied. The tutors did a great job making sure we all learnt something no matter what level we were.”

PREPARING FOR YOUR PIANO DIPLOMA

Fri 27 - Sun 29 September

Tutor: Timothy Barratt

STANDARD: ADVANCED

Our regular tutor Timothy Barratt - ABRSM examiner since 1991, trainer and moderator - leads this course devoted to helping participants to hone their diploma repertoire to perfection, working on aspects of interpretation and technique in a class situation. The primary aim of the course is to instil insights in style, technique and approach that students can apply generally to their practice and performance. In addition to studying the chosen repertoire, there will also be discussion on preparation for the other diploma requirements as appropriate - such as quick study/sight reading and viva voce.

Resident: £280

Non-Resident: £205

Code: 19/296

KEEPING IT FRESH

Mon 14 - Thu 17 October

Tutor: Heli Ignatious-Fleet

STANDARD: ADVANCED

In her course Heli's aim is to give each pianist useful fresh insights, both musical and technical. Participants are encouraged to make the most of their potential in an inspiring and positive atmosphere. Imagery as well as physical freedom are emphasised; practice and performance strategies will be tackled. There is a list of set pieces, from Grade 7 upwards, but own choice pieces are also welcome. Short individual tutorials are offered, but the course sessions are shared by the group - supportive fellow students.

Resident: £400

Non-Resident: £305

Code: 19/352

HARPSICHORD ACCOMPANIMENT: FIGURING IT OUT

Mon 11 - Thu 14 November

Tutor: Robin Bigwood

STANDARD: UPPER INTERMEDIATE, ADVANCED

Resident: £400 Non-Resident: £305 Code: 19/358

FOR COURSE DESCRIPTION SEE PAGE 53

LEADING FROM BEHIND: A COURSE FOR CHAMBER MUSIC GROUPS WITH PIANO



Mon 25 - Wed 27 November

Tutors: Nigel Clayton, Imma Setiadi

STANDARD: UPPER INTERMEDIATE, ADVANCED

Resident: £280 Non-Resident: £205 Code: 19/20U

FOR COURSE DESCRIPTION SEE PAGE 37

STRING AND PIANO ENSEMBLES WITH NIGEL CLAYTON AND THE BINGHAM

2 NIGHT OPTION

Fri 29 November - Sun 1 December

3 NIGHT OPTION

Fri 29 November - Mon 2 December

Tutors: Members of the Bingham String Quartet, Nigel Clayton

STANDARD: UPPER INTERMEDIATE, ADVANCED

2 NIGHT OPTION

Resident: £290 Non-Resident: £215 Code: 19/20V

3 NIGHT OPTION

Resident: £410 Non-Resident: £315 Code: 19/365

FOR COURSE DESCRIPTION SEE PAGE 21

“ Relaxed, friendly and amazing. We all improved over the weekend! Very confidence building, challenging and extremely enjoyable!

BIG BAND SINGING SUMMER SCHOOL

Mon 22 - Sat 27 July

Tutors: Anton Browne, Jenny Howe

STANDARD: LOWER/UPPER INTERMEDIATE, ADVANCED

Resident: £585 Non-Resident: £460 Code: 19/503

FOR COURSE DESCRIPTION SEE PAGE 54

COME AND SING WITH JOHN RUTTER



Sat 27 July

Tutor: John Rutter

STANDARD: ALL

Distinguished composer and conductor John Rutter leads this brand new Singing Day devoted to choral pieces by a variety of composers old and new and some of John's own music. The event is suitable for those who have at least some choral experience and music-reading ability, but no advance preparation is expected. Join us for a fun day of music-making and John will also slip in some vocal and musical hints and tips for singers. The day will begin at 11am (arrival from 10.30am) and will end around 5pm, and the fee includes lunch and the usual breaks for tea/coffee and cake.

Tutor website: www.johnrutter.com

Fee: £50 Code: 19/JR1

WE OFFER A 25% DISCOUNT ON BASIC COURSE FEES FOR GUESTS UNDER 27 ON 1 JANUARY 2019

SARAH LEONARD'S VOCAL SUMMER SCHOOL

Mon 5 - Fri 9 August

Tutors: Sarah Leonard, Stephen Gutman

STANDARD: UPPER INTERMEDIATE, ADVANCED

Participants (of approximately Grade 7 standard and above) are invited to bring a broad repertoire of songs and arias. Improve communication with your audience by gaining insights into music and text which will be reflected in and therefore enrich your performance. Discuss how technique can enhance your interpretation, and examine ways of removing the physical tensions that can adversely affect technique. Bring four pieces in any style and please let us know in advance what you have chosen. A ticket will also be included for Sarah and Stephen's recital on Tuesday evening. We will spend some time working closely with the flutes this year, with a combined masterclass on the Thursday evening and a joint informal concert on the last afternoon.

Resident: £490 Non-Resident: £385 Code: 19/406

MADRIGAL AND PARTSONG SUMMER SCHOOL

Mon 12 - Thu 15 August

Tutors: James Oldfield, Stephen Meakins

STANDARD: UPPER INTERMEDIATE, ADVANCED

James Oldfield returns to Benslow Music in 2019 to guide singers through the art of consort singing, and we'll enjoy some sight reading challenges whilst exploring the riches of secular music from Monteverdi to Barber. Participants can also suggest and bring favoured repertoire. Excellent sight reading and the ability to hold a line, sustain a phrase, and stay in tune are all essentials, and there will be the opportunity for singing one voice per part in small groups as well as a chamber choir. This course is ideal for instrumentalists who play at a high level and wish to transfer their chamber music skills into a vocal context. An enjoyable, relaxed and inclusive atmosphere whilst making music at a high level.

Tutor website: www.james-oldfield.com

Resident: £400 Non-Resident: £305 Code: 19/343

JAZZ AND POP SINGING

Fri 23 - Sun 25 August

Tutor: Anton Browne

STANDARD: LOWER/UPPER INTERMEDIATE, ADVANCED

The charismatic Anton Browne, regular tutor on our popular Big Band Singing Summer School and tutor at The BRIT School since 1991, returns for another instalment of his course designed to introduce singers to the freedoms and disciplines of the Jazz/Soul/Pop singer in a practical way. The course will include tuition on appropriate vocal technique and phrasing and how to "make the song your own", on interpretation and the use of a microphone. He will cover the recognition of commonly used intervals, chord types and song format/structure - that will help with ad-libs and improvisation, running and riffing. The course will conclude with a performance to the class and a Q and A session. No previous knowledge of jazz or pop singing is required.

Tutor website: www.thesingthing.com

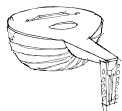
Resident: £280

Non-Resident: £205

Code: 19/279

ENGLISH LUTE SONGS OLD AND NEW

IN ASSOCIATION WITH THE LUTE SOCIETY

Mon 16 - Thu 19 September

Tutors: Clare Wilkinson, Michael Solomon Williams,
Jacob Heringman

STANDARD: UPPER INTERMEDIATE, ADVANCED

Resident: £410

Non-Resident: £315

Code: 19/345

FOR COURSE DESCRIPTION SEE PAGE 49

GRAHAM TREW'S VOCAL WORKSHOP

Mon 7 - Thu 10 October

Tutors: Graham Trew, Gavin Roberts

STANDARD: LOWER/UPPER INTERMEDIATE, ADVANCED

In this course the encouraging and experienced Graham Trew, aided by pianist Gavin Roberts, will help participants improve communication with audiences by gaining thoughtful insights into music, text and their relationship with one another. The idea is that your performance will then reflect these insights and be thus enriched. We'll discuss how technique can enhance interpretation and examine ways of removing the physical tensions that affect technique adversely. Please bring at least three pieces and Graham and Gavin will help you with them.

Resident: £400

Non-Resident: £305

Code: 19/349

“Enjoyable, exhilarating, challenging, motivating, sociable and lots of cake! In short I would highly recommend.”

"THOSE CARES THAT DO ARISE FROM PAINFUL MELANCHOLY": DEPICTING DISAFFECTION IN THE ENGLISH MADRIGAL

NEW

Sun 13 October

Tutor: Dr Clive McClelland

STANDARD: UPPER INTERMEDIATE, ADVANCED

The cultivation of the figure of the melancholic individual in Elizabethan and Jacobean England owed much to the madrigalists. As a stock figure, the lovesick melancholic can be discerned in a large number of madrigal texts of the period, usually as the author of the text being sung (and, by implication, the composer of the music too). He frequently expresses his torments with references to weeping, sighing, lamenting and dying - this last of course carrying a double meaning all too appropriate in the circumstances. Applications are invited from singers (all voices) to this new course, led by Dr Clive McClelland, Associate Professor in Music at the University of Leeds and Director of Leeds Baroque Choir. We shall explore this rich repertoire, including Weelkes' *O Care, thou wilt despatch me*, Bennet's *Weep, O mine eyes*, Tomkins' *Too much I once lamented*, Ward's *Out from the vale*, and Wilbye's *Draw on, sweet Night* - do bring along a copy of the Oxford Book of English Madrigals (a small number of copies will be available to borrow on the day). The opportunity will be made available to employ period pronunciation. We begin at 10am, break for lunch (included in the price) at 1pm and end no later than 5pm.

Fee: £75

Code: 19/115

THE WONDERFUL WORLD OF MUSICAL THEATRE

NEW

Mon 21 - Wed 23 October

Tutors: Sarah Leonard, Stephen Dickinson

STANDARD: LOWER/UPPER INTERMEDIATE, ADVANCED

Explore the diverse Musical Theatre song repertoire over the last 75 years with Sarah Leonard and Stephen Dickinson. Sarah has taught on the BA Acting Musical Theatre Course at Royal Central School of Speech and Drama for 14 years and Stephen has taught at Arts Ed for many years. They have a wealth of experience between them. Please bring three songs by any composer from Rodgers and Hammerstein to the present day. We will work on the vocal techniques and dramatic styles required to perform the songs convincingly. Props are welcome! On Tuesday evening Sarah and Stephen will give an illustrated talk on the music of Stephen Sondheim.

Tutor website: www.sarahleonard.me

Resident: £280

Non-Resident: £205

Code: 19/20G



*The
Camden
Choir*

**SINGING
WEEKEND
19 - 21 JULY 2019**

**A weekend of singing with the
Camden Choir and friends at
Benslow Music, directed by
Julian Williamson.**

**If you are an experienced singer who enjoys a
wide range of music from the classical repertoire,
why not join us?**

**There's an organised programme of sessions
with free time on Saturday afternoon when you
can explore the local area or just enjoy Benslow
Music's beautiful garden. Later on Saturday
evening, there's a less formal session - you can
bring your own favourites for us all to sing.**

**For further details and a booking form, go to our
website. Bookings accepted from 31 January 2019.**

www.camdenchoir.london

THE ENCHANTRESS OF SEVILLE WITH JOGLARESA

NEW

Fri 15 - Sun 17 November

Tutors: Belinda Sykes and friends

STANDARD: ALL

Resident: £290

Non-Resident: £215

Code: 19/20P

FOR COURSE DESCRIPTION SEE PAGE 53

ENGLISH AND AMERICAN SONG

Fri 6 - Sun 8 December

Tutors: Sarah Leonard, Stephen Gutman


STANDARD: LOWER/UPPER INTERMEDIATE, ADVANCED

Sarah Leonard and Stephen Gutman help singers explore the highways and byways of 20th and 21st century English and American song, looking at a wide range of composers including Parry, Gurney, Quilter, Ireland, Warlock, Vaughan Williams, Holst, Finzi, Head, Bridge and Britten and, from across the pond, Barber, Copland, Ives and Sondheim. We would like you to bring along three prepared songs, one of which can be from the lighter side of the repertoire. We'll end the course with a short informal concert given by participants. Please let us know in advance what songs you have chosen to prepare for the masterclasses and the concert.

Resident: £280

Non-Resident: £205

Code: 19/20W

- 
- New Harpsichords, spinets and virginals
 - Servicing, tuning, repairs, and restoration
 - Hire for concerts, broadcasts and recording
 - Sale of tools, spares and accessories
 - Tuition in tuning and maintenance
 - Valuations and specialist advice



Andrew Wooderson Harpsichords

Unit 31 The Hop Store,
Old Bexley Business Park, 19 Bourne Road,
Bexley, Kent, DA5 1LG

01322 558326

andrew.wooderson@btinternet.com

BAROQUE TRIO SONATAS WITH DA CAMERA

Mon 8 - Wed 10 July

Tutors: Emma Murphy, Susanna Pell, Steven Devine

STANDARD: UPPER INTERMEDIATE, ADVANCED

We are delighted to welcome back Da Camera to lead this popular course for pre-formed groups (Grade 6 and above please). Every session will be different with an exciting new piece, and new groups will be formed for a couple of the sessions during the course to provide variety and camaraderie. Instruments welcomed are: recorder, oboe, flute, violin, treble viol, viola da gamba, cello, bassoon, harpsichord. Each group will be proactively coached by every tutor during the course on works students may bring themselves, as well as music provided by the tutors. Technical and musical aspects will be looked at in works by composers such as Telemann, Schickhardt, Loeillet, Scarlatti, Sammartini, Bach, Purcell and others. We will be playing at A=415 and the course fee includes entry to Da Camera's concert on the first evening.

Resident: £290

Non-Resident: £215

Code: 19/268

THE INTERNATIONAL VIOL SUMMER SCHOOL

Sun 14 - Fri 19 July

Tutors: Alison Crum, Ibi Aziz, Roy Marks, Peter Wendland

STANDARD: ADVANCED

Our prestigious and well-established International Viol Summer School, directed by Alison Crum, offers an invaluable chance for viol players with a particular interest in English consort music to work with members of the world renowned Rose Consort of Viols. There will also be optional sessions on several other aspects of viol music, such as bowing technique, madrigals and motets, early renaissance repertoire and the art of continuo playing, as well as lectures and demonstrations. We are looking for experienced players with good sight reading skills capable of playing at least two sizes of viol. The course fee includes entry to the Rose Consort's concert on Tuesday 16 July at 8pm. Please note that this course finishes after lunch on Friday 19 July.

Resident: £585

Non-Resident: £460

Code: 19/501

Benslow Music – [Short Courses](#) • [Concerts](#) • [Events](#)

BAROQUE BUFFET: BAROQUE ON MODERN INSTRUMENTS

Mon 12 - Thu 15 August

Tutors: Julia Bishop, Sophie Middleditch, Julian Perkins

STANDARD: UPPER INTERMEDIATE, ADVANCED

Come and explore the mouth-watering temptations of the 'Baroque Buffet', sampling delicious repertoire for permutations of strings and wind, and finding out about 'le bon goût' along the way! This is your chance to explore drama, affect, rhetoric, exuberance, good manners (and possibly bad), passion and daring...to name but a few characteristics of this extraordinary period of music and artistic history. Stimulate your musical taste buds through fleeting encounters with strangers or old friends guided by our tutors. This is guaranteed to be fun, challenging and hopefully satiating! There will be an emphasis on small ensembles (pre-formed groups are welcome) as well as a mixture of orchestral coaching.

Resident: £400

Non-Resident: £305

Code: 19/342

MADRIGAL AND PARTSONG SUMMER SCHOOL

Mon 12 - Thu 15 August

Tutors: James Oldfield, Stephen Meakins

STANDARD: UPPER INTERMEDIATE, ADVANCED

Resident: £400

Non-Resident: £305

Code: 19/343

FOR COURSE DESCRIPTION SEE PAGE 42

WE OFFER A 25% DISCOUNT ON BASIC COURSE FEES FOR GUESTS UNDER 27 ON 1 JANUARY 2019

JOHN PLAYFORD IN THE 21ST CENTURY

Fri 16 - Sun 18 August

Tutors: Paul Hutchinson, Karen Wimhurst

STANDARD: LOWER/UPPER INTERMEDIATE, ADVANCED

John Playford's Dancing Master first published in 1651 is a wonderful example of crossover music genres. Featuring Purcell alongside English country dance tunes and strains of European music this is a course where all players, from traditional, classical or jazz backgrounds can come and enjoy themselves. The course will open up these dance tunes through new arrangements, improvisational and compositional techniques with a view to playing them for dancing. Come and explore this wonderful musical heritage, play in a variety of ensembles and experiment along the way. All instruments welcome. Included in the fee is a public concert given by Paul and Karen on the first evening.

Tutor website: www.secretaccordionist.co.uk

Resident: £290

Non-Resident: £215

Code: 19/274

"AMONGST MOUVEMENTS AND RETAKES": EXPLORING MUSIC AND DANCE IN THE 17TH AND 18TH CENTURIES



Fri 23 - Sun 25 August

Tutors: Ricardo Barros, Nicolette Moonen

STANDARD: ADVANCED

A brand new course for advanced Baroque string players, in which we will explore the relationship between music and dance in 17th- and 18th-century repertoire. We will be dancing and playing, and our emphasis will be on the implication that dancing has on playing. The course will focus both on 17th-century repertoire (Lully and Rebel) purposely composed for dancing, and the solo Suites and Partitas by J S Bach (Ricardo will be choreographing and dancing to your solo Bach!). A hands-on approach, yet based on and enriched by a multitude of primary sources. Ricardo Barros and violinist Nicolette Moonen have forged an artistic partnership through the passion they share for French Baroque music. They have collaborated artistically and academically in papers, workshops, courses and performances, most recently at the Utrecht Early Music Festival and in a project for the Historical Royal Palaces at the Yale Centre for British Art. Don't forget our automatic 25% reduction on the basic course fee (excluding supplements) for under 27s.

Tutor websites: www.mercuriuscompany.co.uk www.thebachplayers.org.uk

Resident: £280

Non-Resident: £205

Code: 19/278

“An entirely inclusive course for all lovers of this genre of music. It is a wonderful way to spend a day or two with others who are all passionate about the same thing.”



ENGLISH LUTE SONGS OLD AND NEW

IN ASSOCIATION WITH THE LUTE SOCIETY

NEW



Mon 16 - Thu 19 September

**Tutors: Clare Wilkinson, Michael Solomon Williams,
Jacob Heringman**

STANDARD: UPPER INTERMEDIATE, ADVANCED

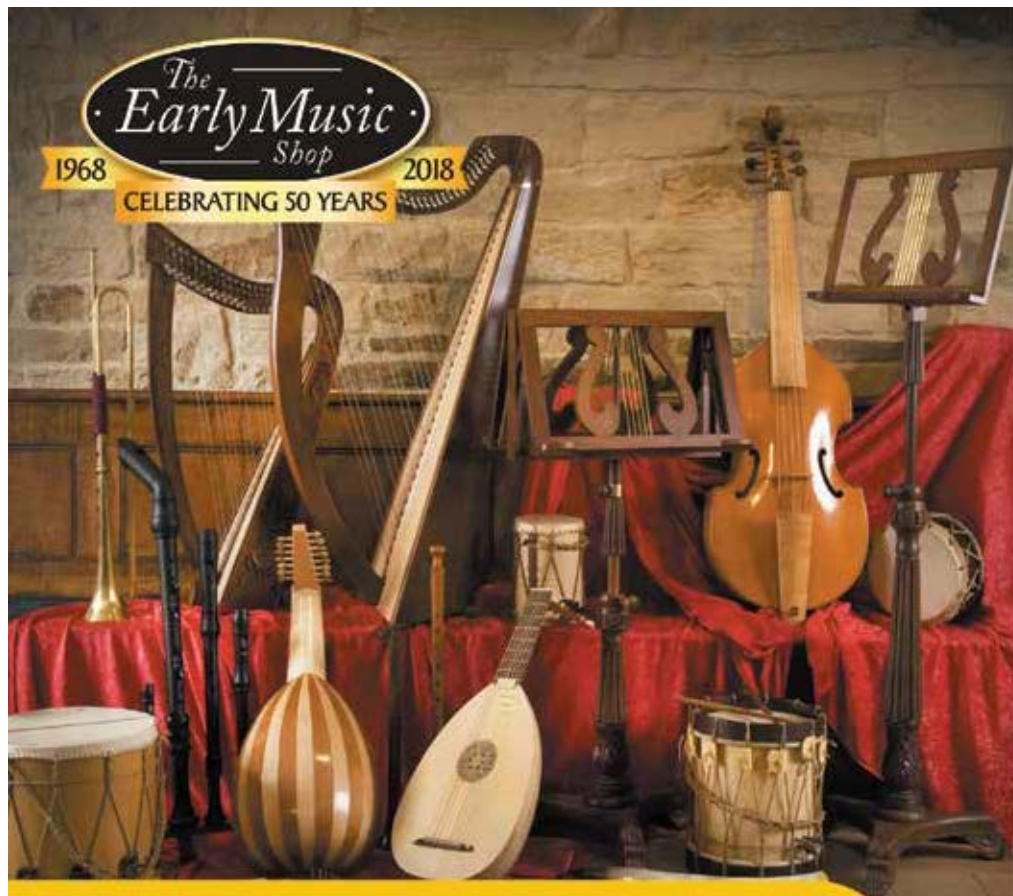
We join forces with the Lute Society once again for this course devoted to lute song, with a difference! This year we will work with Clare, Michael and Jacob on the repertoire of Elizabethan and Jacobean lute songs plus songs (part songs and lute songs) from the Stephen Wilkinson generation. Stephen Wilkinson, one of our Vice-Presidents, will be celebrating his 100th birthday year in 2019. All voice types and lutenists are welcome, especially tenors and basses! We will also look at lute songs and lute song arrangements by other composers, and will discuss the practice of creating your own lute song from a part song or motet, as players of the time did. In addition to coaching singers and lute players in an open lesson format on music brought along, there will be scheduled "special topic" classes, in which Clare, Michael and Jacob introduce participants to those areas which may be unfamiliar. The course fee also includes entry to a recital on the first evening given by our tutors.

Tutor website: www.clare-wilkinson.com

Resident: £410

Non-Resident: £315

Code: 19/345



The
Early Music
Shop

1968

2018

CELEBRATING 50 YEARS

The world's
largest
early music
specialists

Recorders, lutes, viols,
harps, early woodwind
and a lot more..

HEAD OFFICE

Salts Mill, Saltaire

Tel: 01274 288100

sales@earlymusicshop.com

Denmark St, London

Tel: 0207 632 3960

www.earlymusicshop.com

REDISCOVERING ROSENMÜLLER



Mon 23 - Thu 26 September

Tutors: William Carslake, Theresa Caudle

STANDARD: ADVANCED

This year's course of 17th-century music for voices and instruments celebrates the 400th anniversary of the birth of Johann Rosenmüller (1619 - 1684). Following his early career in Leipzig, Rosenmüller spent over twenty-five years in Venice before returning to Germany. The result is a fine blend of Italian and German styles in appealing and approachable sacred music, and in the excellent sonatas in two to five parts published in 1682. William will direct the large-scale choral pieces with five-part string ensemble such as *Lauda Jerusalem* and *Also hat Gott* as well as choral pieces with continuo only. For those who wish to have the opportunity to sing solos, we will explore some smaller-scale works for one or two voices with instruments. Players will also have the chance to work with Theresa on instrumental music from the 1682 collection. The course is for a chamber choir of up to twenty singers with an ensemble of baroque strings and continuo. We can offer places for up to six violins, four violas or viols, two cellos or bass violins, one bass viol, two harpsichords (and/or organ) and one theorbo. String players with modern set-ups are welcome if they use gut strings and baroque bows, and preferably have some experience of baroque style. We will be working at A=415. Both singers and players need to be confident sight-readers.

Resident: £400

Non-Resident: £305

Code: 19/347

HARMONIEMUSIK WITH BOXWOOD AND BRASS

Fri 18 - Sun 20 October

Tutors: Emily Worthington, Robert Percival, Martin Lawrence

STANDARD: UPPER INTERMEDIATE, ADVANCED

Resident: £280

Non-Resident: £205

Code: 19/20D

FOR COURSE DESCRIPTION SEE PAGE 31

THE SEVENTEENTH-CENTURY STRING BAND



Mon 28 - Thu 31 October

Tutors: Judy Tarling and friends

STANDARD: UPPER INTERMEDIATE, ADVANCED

Join historical specialist Judy Tarling (violin) as we seek to re-create the string band of the 17th-century court, emulating the '24 violons' of Louis XIV which was copied in the theatres of Restoration England. The '24' was composed of varying sizes of members of the violin family, particularly strong in the three viola parts, with equal treble and bass sections. We are seeking an orchestra of baroque string players at A=415 and continuo players (harpsichord, theorbo, baroque guitar) to explore repertoire ranging from Lully to Purcell, including German suites by Fischer and the Austrian Schmelzer. Suites, overtures and dances will all demonstrate how the French dance style raged around Europe.

Resident: £400

Non-Resident: £305

Code: 19/354

“

The weekend I go on a music course at Benslow Music, is the highlight of my musical year and this year it was very special.”



HARPSICHORD ACCOMPANIMENT: FIGURING IT OUT

Mon 11 - Thu 14 November

Tutor: Robin Bigwood

STANDARD: UPPER INTERMEDIATE, ADVANCED

Are you a harpsichordist who enjoys playing baroque chamber music and would like to be able to realise figured basses in a true baroque manner? This course aims to give a thorough grounding in continuo practice, letting you leave behind editorial realisations, and create your own stylish accompaniments. Alongside sessions that carefully and gradually introduce the essential theoretical and harmony concepts, you will also do a lot of playing, in small groups, sometimes accompanying a solo line. No prior experience with figured bass or formal music theory is required or expected. Participants should be keyboard players fluent in reading both treble and bass clefs.

Resident: £400

Non-Resident: £305

Code: 19/358

THE ENCHANTRESS OF SEVILLE WITH JOGLARESA



Fri 15 - Sun 17 November

Tutors: Belinda Sykes and friends

STANDARD: ALL

Another opportunity to join medieval specialists Joglearesa, who "bring anarchy and sensuality back into medieval music" on this exciting follow-up course. Come and explore the roots of Iberian song: motets from the Convent of Las Huelgas, Arab-Andalusian ballads and Judeo-Spanish romanzas. We'll perform music and songs, kept alive through centuries of tradition - a colourful and timeless kaleidoscope of Occident and Orient connecting the Occident to the Orient, and the 11th to the 21st century. This course is open to all instruments (both modern and period) and singers, and the course fee also includes entry to Joglearesa's concert on the first night of the course. We will perform at A=440.

Resident: £290

Non-Resident: £215

Code: 19/20P

CONSORTING VIOLS

2 NIGHT OPTION

Fri 22 - Sun 24 November

3 NIGHT OPTION

Thu 21 - Sun 24 November

Tutors: Alison Crum, Roy Marks, Ibi Aziz, Peter Wendland

STANDARD: ALL

This extremely popular weekend course offers up to eight pre-formed viol consorts of any level the chance to work with Alison Crum and members of the renowned Rose Consort of Viols on music of their own choice. This year we are offering the option of an early arrival for an extra day of coaching. Each group will be coached by a tutor for half of every playing session, and each will work with every tutor during the course. Students will be coached on technical and musical aspects of what they play, and will learn about the music's structure and about how better to articulate it through applying historically appropriate techniques.

Tutor website: www.alisoncrum.co.uk

2 NIGHT OPTION

Resident: £280

Non-Resident: £205

Code: 19/20R

3 NIGHT OPTION

Resident: £400

Non-Resident: £305

Code: 19/364

**WE OFFER A 25% DISCOUNT ON BASIC COURSE
FEES FOR GUESTS UNDER 27 ON 1 JANUARY 2019**

SUMMER SAXES

Mon 1 - Thu 4 July

Tutors: Gerard McChrystal and friends

STANDARD: LOWER/UPPER INTERMEDIATE, ADVANCED

Resident: £400 Non-Resident: £305 Code: 19/335

FOR COURSE DESCRIPTION SEE PAGE 23

DISCOVERING THE WORLD OF JAZZ

Mon 8 - Wed 10 July

Tutor: Marco Marconi

STANDARD: ELEMENTARY, LOWER/UPPER INTERMEDIATE

International jazz pianist and composer Marco Marconi leads this course designed for players who are in the early stages of learning jazz, or for more experienced musicians interested in trying jazz for (perhaps) the first time. Marco will introduce the skills needed and offers the opportunity to develop your relationship with the spectacular and vast world of jazz. He will also reveal some of the secrets that he has discovered during a long and in depth study of this kind of music. It will definitely be an unforgettable course. No prior experience of playing jazz is necessary and all instruments are welcome.

Tutor website: www.marcomarconi.com

Resident: £280 Non-Resident: £205 Code: 19/269

“ You must come.
It was an inspiration!”

BIG BAND SUMMER SCHOOL

Mon 22 - Sat 27 July

Tutors: Paul Eshelby and friends

STANDARD: UPPER INTERMEDIATE, ADVANCED

A wonderful opportunity to enjoy and share your love for the sound of the Big Band. We'll cover a wide range of repertoire under the expert guidance of Paul Eshelby, trumpeter with the BBC Big Band, who has played with everyone from Ella Fitzgerald to Phil Collins via Shirley Bassey. We're looking for saxophone, trumpet, trombone, piano, guitar, bass and drum players of at least Grade 6 standard, and we'll be working alongside the Big Band Singing Summer School (piano and bass players should be able to read music and chord symbols). We finish after breakfast on the final day and entry to the A Night of Jazz concert on Thursday 25 July is included in the course fee.

Resident: £585 Non-Resident: £460 Code: 19/502

BIG BAND SINGING SUMMER SCHOOL

Mon 22 - Sat 27 July

Tutors: Anton Browne, Jenny Howe

STANDARD: LOWER/UPPER INTERMEDIATE, ADVANCED

If you've ever yearned to sing with the sound of a Big Band behind you, then here's your chance. Working under the guidance of Anton Browne and Jenny Howe, two of the finest Big Band singers around, you'll explore and develop vocal techniques relevant to the genre, study the art of stagecraft and presentation, discover how to make a well-known song your own, and learn about microphone technique and improvisation. We'd like you to prepare two jazz standard songs and to bring along chord charts, we can allocate a big band song from our library or you can bring your own arrangement. A recording and playback device will also prove useful. We finish after breakfast on the final day and entry to the A Night of Jazz concert on Thursday 25 July is included in the course fee.

Resident: £585 Non-Resident: £460 Code: 19/503

ABRSM JAZZ PIANO SYLLABUS FOR PIANO TEACHERS

Fri 2 - Mon 5 August

Tutor: Tim Richards

STANDARD: ADVANCED

Resident: £410

Non-Resident: £315

Code: 19/338

FOR COURSE DESCRIPTION SEE PAGE 38

JAZZ AND POP SINGING

Fri 23 - Sun 25 August

Tutor: Anton Browne

STANDARD: LOWER/UPPER INTERMEDIATE, ADVANCED

Resident: £280

Non-Resident: £205

Code: 19/279

FOR COURSE DESCRIPTION SEE PAGE 43

THE BENSLOW MANDOLIN WEEKEND

Fri 30 August - Sun 1 September

Tutor: Matt Norman

STANDARD: LOWER/UPPER INTERMEDIATE, ADVANCED

Resident: £280

Non-Resident: £205

Code: 19/282

FOR COURSE DESCRIPTION SEE PAGE 13

ELEMENTARY AND INTERMEDIATE SAXES



Mon 16 - Thu 19 September

Tutors: Gerard McChrystal and friends

STANDARD: ELEMENTARY, LOWER INTERMEDIATE

Resident: £400

Non-Resident: £305

Code: 19/346

FOR COURSE DESCRIPTION SEE PAGE 29

“The course was excellent. There was such a range of repertoire and a good balance of large groups and sectionals. The tutors were brilliant and so friendly and approachable.”

ACCOMPANIMENT TO SILENT FILM**Mon 23 - Wed 25 September**

Tutor: David Sutton-Anderson

STANDARD: ELEMENTARY, LOWER/UPPER INTERMEDIATE, ADVANCED

This brand new course provides the opportunity to learn and develop skills in accompanying for silent film using a variety of musical styles and improvisation. Short scenes will be selected from films of the silent movie era designed to stimulate participants' musical imaginations with the support and guidance of the tutor, working both individually as well as in small groups. The course will culminate with an informal screening with live musical performance from the participants. No previous improvising experience is required.

Resident: £280

Non-Resident: £205

Code: 19/292

CUBAN SALSA WITH MARCO MARCONI**Mon 14 - Wed 16 October**

Tutor: Marco Marconi

STANDARD: LOWER/UPPER INTERMEDIATE, ADVANCED

International jazz pianist and composer Marco Marconi leads this course offering all musicians the opportunity to develop their relationship with the spectacular and vast world of Cuban Salsa. Marco will talk about and demonstrate a journey of Latin rhythms from Brazil down to Cuba from Bossa-nova, Samba and Shoro to Salsa, Clave, Rhumba and Cha-Cha, analysing and discussing the different aspects of each. Often the difference between these styles is very small so Marco will reveal some of the secrets that he has discovered during a long and in depth study of this kind of music. Included in the course fee is entry to the tutor concert on the Tuesday evening.

Tutor website: www.marcomarconi.com

Resident: £290

Non-Resident: £215

Code: 19/20A

BEYOND JAZZ GUITAR**Mon 14 - Wed 16 October**

Tutor: Simone Gubbiotti

STANDARD: LOWER/UPPER INTERMEDIATE, ADVANCED

This brand new course led by international guitarist and educator Simone Gubbiotti is a must to expand your creativity on the guitar. Different points of view for improvisation will be discussed starting from normal arpeggios and extended to thematic improvisation to increase your melodic sense and creative musical language. By the end of the course you will have developed your melodic abilities and also created useful motives to explore in your own compositions and performances. Included in the course fee is entry to the tutor concert on the Tuesday evening. Simone has performed with musicians including Peter Erskine, Joe La Barbera, Sid Jacobs, Arthur Blythe, Joe Diorio, Darek Oles, Adam Nussbaum and Jay Anderson and we are delighted to welcome him to Benslow Music in our 90th anniversary year.

Resident: £290

Non-Resident: £215

Code: 19/20C



Photo © Simone Gubbiotti

THE WONDERFUL WORLD OF MUSICAL THEATRE

NEW

Mon 21 - Wed 23 October

Tutors: Sarah Leonard, Stephen Dickinson

STANDARD: LOWER/UPPER INTERMEDIATE, ADVANCED

Resident: £280

Non-Resident: £205

Code: 19/20G

FOR COURSE DESCRIPTION SEE PAGE 44

UKULELE ENSEMBLE

NEW

Fri 25 - Sun 27 October

Tutor: Samantha Muir

STANDARD: LOWER/UPPER INTERMEDIATE, ADVANCED

Resident: £280

Non-Resident: £205

Code: 19/20K

FOR COURSE DESCRIPTION SEE PAGE 17

“

An absolute delight from beginning to end. A course in which to learn a lot, improve ability and have some fun.”

JOHN PLAYFORD IN THE 21ST CENTURY

Fri 16 - Sun 18 August

Tutors: Paul Hutchinson, Karen Wimhurst

STANDARD: LOWER/UPPER INTERMEDIATE, ADVANCED

Resident: £290 Non-Resident: £215 Code: 19/274

FOR COURSE DESCRIPTION SEE PAGE 48

FOLK ORCHESTRA

Fri 13 - Sun 15 September

Tutors: Jon Bennett, Liz van Santen

STANDARD: LOWER/UPPER INTERMEDIATE

A weekend workshop for folk instrumentalists and singers. Whatever acoustic instrument you play (fiddle, fretted instruments, whistles/flute, squeeze boxes, etc) you're welcome. You might also like to lead a song. The two tutors are both singers and multi-instrumentalists who can offer some one-to-one guidance if time permits. We'll have simple parts for anything you bring and most of the music will be available in advance. We'll work through about 10 tunes and songs with arrangements, occasionally splitting into smaller groups, then come back together for the whole "orchestra". You don't need to read music, but no absolute beginners, please. On the Friday and Saturday evenings there will be an informal session where you're welcome to perform your own songs/tunes.

Tutor website: www.moonrakers.net

Resident: £280 Non-Resident: £205 Code: 19/288

FIDDLE MUSIC OF SCOTLAND AND IRELAND

Fri 27 - Sun 29 September

Tutor: Pete Cooper

STANDARD: LOWER/UPPER INTERMEDIATE, ADVANCED

Pete Cooper's course is dedicated to introducing fiddlers to the wonderful repertoire of traditional airs and dance tunes. You don't need previous experience of folk fiddling, but you do need to be of at least intermediate standard and to be game for the challenge of learning a range of jigs, reels, hornpipes, strathspeys and so on, all by ear! Pete will also teach you how to bow and finger them in the traditional way and will give you legal copies of the written notes to take away at the end of the course. We will also be joining the Clarsach course on the Saturday evening for an impromptu ceilidh.

Tutor website: www.petecooper.com

Resident: £280 Non-Resident: £205 Code: 19/293

“ A really good way to get back into playing or focus on what you need as an individual to improve your playing and have fun doing it.”

THE CLARSACH COURSE

IN ASSOCIATION WITH THE CLARSACH SOCIETY



Fri 27 - Sun 29 September

Tutors: Keziah Thomas, Rachel Hair

STANDARD: ELEMENTARY, LOWER/UPPER INTERMEDIATE, ADVANCED

Now a regular feature of our calendar, the Clarsach Society again joins forces with Benslow Music for this unique course for Celtic harpists. We will be playing solos and ensembles and working both from notated music and by ear. The tutors will be very willing to work with you on pieces which you bring along and also show off their own skills to inspire you further. We will also be combining with the concurrent fiddle course for an impromptu ceilidh on the Saturday evening.

Tutor websites: www.keziah.co.uk

www.rachelhair.com

Resident: £280

Non-Resident: £205

Code: 19/294

THE BENSLOW KLEZMER ORCHESTRA

Mon 25 - Wed 27 November

Tutors: Members of the London Klezmer Quartet

STANDARD: LOWER/UPPER INTERMEDIATE, ADVANCED

Come and explore the celebratory and soulful music of Jewish Eastern Europe in a klezmer kapelye (ensemble). We will use printed music to learn melodies and bass lines, and explore how to create accompaniments and harmonies within the tradition. Dance music studied will include shers, zhoks, terkishers, and bulgars. No previous klezmer experience necessary, but you should know the names of notes on your instrument in terms of fingering, and being able to find them with confidence, and be able to play scales and arpeggios in (concert pitch) C, D, F, G major and minor. Included in the course fee is entry to the tutor concert on the Tuesday evening.

Tutor website: www.londonklezmerquartet.com

Resident: £290

Non-Resident: £215

Code: 19/205

EDWIN ROXBURGH'S COMPOSING SUMMER SCHOOL

Mon 29 July - Fri 2 August

Tutor: Edwin Roxburgh

STANDARD: ADVANCED

The distinguished composer Edwin Roxburgh returns to Benslow Music to lead this composing course designed for those aiming to pursue composition to the very highest level and who are perhaps already studying or intend to study at a recognised music college. Edwin will work in detail on participants' work in progress and will also throw in a few challenges during the week. Please remember that a discount of 25% applies to those under 27 as of 1 January 2019.

Resident: £490 Non-Resident: £385 Code: 19/405

CHRISTOPHER GAYFORD'S CONDUCTING SUMMER SCHOOL

Fri 9 - Mon 12 August

Tutor: Christopher Gayford

STANDARD: ADVANCED

Chris Gayford helps all conductors, whether or not they have previous experience, achieve remarkable results by working on score-learning, interpretation, gesture, rehearsing techniques and self-confidence, using examples from the choral, orchestral and opera repertoires. Some pieces will be specified in advance so that you can do some initial preparation. All participants are asked to bring any instruments that they might play with them so that the group can form ad hoc ensembles. The course will again run alongside our String Orchestra course and we will be offering some podium time with them each day. Don't forget the 25% discount (excluding room supplements) for under 27s. Members of Making Music ensembles are also entitled to a special reduction of 15% on the basic course fee.

Resident: £400 Non-Resident: £305 Code: 19/340

IMPROVE YOUR AURAL SKILLS

Fri 13 - Sun 15 September

Tutor: Katharine Bramley

STANDARD: ALL

For many people taking examinations, the aural tests are a challenge, particularly at the higher grades. Let Katharine Bramley dispel your fears and enhance your general listening experience with a course tailored to students' needs, grades, and exam boards. This course is particularly suitable for those taking Grades 5 - 8 as well as those who simply want to improve their aural skills.

Resident: £280 Non-Resident: £205 Code: 19/289

ACCOMPANIMENT TO SILENT FILM



Mon 23 - Wed 25 September

Tutor: David Sutton-Anderson

STANDARD: ELEMENTARY, LOWER/UPPER INTERMEDIATE, ADVANCED

Resident: £280 Non-Resident: £205 Code: 19/292

FOR COURSE DESCRIPTION SEE PAGE 56

“Outstanding and well worth the money.”

GRADE 5 THEORY

Fri 27 - Sun 29 September

Tutor: Katharine Bramley

STANDARD: LOWER INTERMEDIATE

Are you marooned at Grade 5 on your instrument, disqualified from taking any more exams because you have yet to pass Grade 5 Theory? Or are you simply interested in the theory that lies behind the music that you play? Either way, this course is ideal for you. Katharine Bramley leads an intensive course exploring every nook and cranny of the Associated Board Grade 5 Theory syllabus, including the new format of the exam introduced from January 2018. It will be hard work but Katharine promises that it will also be good fun, and because numbers are limited her sympathetic tuition can be tailored to your individual needs. Please bring along a pencil, eraser, and plenty of manuscript paper. Applicants under the age of 18 are welcome but must be referred to the tutor.

Resident: £280

Non-Resident: £205

Code: 19/295

ARRANGING AND ORCHESTRATION

Fri 15 - Sun 17 November

Tutor: Alwyn Green

STANDARD: LOWER/UPPER INTERMEDIATE, ADVANCED

Discover the joy of creating your own arrangements, learn to arrange piano music for ensemble or even for full orchestra, and learn how to convert an orchestral score into a work for small ensemble or piano. We'll look at instrumental ranges and colours and how to mix and blend them. There will also be demonstrations of the famous Sibelius notation software system. Please bring along anything you are currently working on, manuscript paper, and if you have a laptop you might want to bring it with you too.

Resident: £280

Non-Resident: £205

Code: 19/20Q

COMPOSING WITH ANDREW TOOVEY

Fri 6 - Sun 8 December

Tutor: Andrew Toovey

STANDARD: LOWER/UPPER INTERMEDIATE, ADVANCED

One of the most admired British composers of his generation, Andrew Toovey is also an experienced, sensitive and inspirational teacher. On this weekend course he advises and encourages, enabling students to find their own voices while developing the sometimes painful skills of self-criticism and self-editing. We'll willingly put Andrew in touch with applicants in advance so that he can offer you guidance on how to prepare. We encourage concurrent courses to collaborate.

Tutor website: www.andrewtoovey.co.uk

Resident: £280

Non-Resident: £205

Code: 19/20Y

“ I thoroughly enjoyed the course. It was great to meet with people who share passion for music and enjoy playing together in a group.”

AN INTRODUCTION TO MUSIC THERAPY

Mon 1 - Wed 3 July

Tutor: Polly Bowler

STANDARD: ALL

Polly Bowler has tutored chamber courses at Benslow Music for over 10 years and now brings her expertise to this course which offers insight into the allied healthcare profession of music therapy. A mixture of talks, experiential groups and practical workshops will aid participants' understanding of music therapy; its history; the theories that underpin it; the people it helps; and of improvisation, its predominant, musical tool. The exploration of improvisation will potentially offer participants a fresh approach to their instrumental playing as so many musicians feel safest with a sheet of music in front of them. Participants will need their own instruments. Some small percussion will also be available. Please note that the course is not providing participants with therapy, nor does it qualify participants to provide therapy as qualification requires training.

Tutor website: www.pollybowler.co.uk

Resident: £280

Non-Resident: £205

Code: 19/267



T'AI CHI

Fri 16 - Sun 18 August

Tutor: Glyn Williams

STANDARD: ALL

Described as gentle exercise for increased mobility and well-being, T'ai Chi is a technique which helps musicians and others loosen up, feel more energised and become generally calmer and more relaxed. This discipline has been around for many hundreds of years in China and is now gaining popularity in the West, taken up by those who desire to gain more energy and mobility as well as peace of mind. The course is open to those with experience and those who are new to the technique, which is now commonly taught in music colleges and drama schools. Glyn Williams, who holds qualifications from the T'ai Chi Union of Great Britain, has been teaching T'ai Chi for over twenty years. Please bring a yoga mat or blanket with you.

Tutor website: www.healthytaichichikung.com

Resident: £280

Non-Resident: £205

Code: 19/275

THE SOUNDS OF PROPER POSTURE

Mon 11 - Wed 13 November

Tutors: David Katz, Anna Pope

STANDARD: LOWER/UPPER INTERMEDIATE, ADVANCED

Control is as important to the musician as it is to the athlete. Musicians are athletes. David and Anna return to lead their unique course in our 2019 programme. You will be assessed and guided towards your ideal static and dynamic postures, which will then be related to and integrated with your playing. Generic as well as individually tailored exercises will be taught, with the objective of maintaining appropriate postural and movement skills. Your customised programme will improve postural awareness to help potentially alleviate any current aches and pains and prevent new ones starting up, promote greater ease in playing and enhance performance by improving tone quality, technical facility, stamina, confidence and communication. There will be opportunities for solo and ensemble playing. All participants will receive a video diary of their individual sessions. Over the last 10 years David and Anna have pioneered a method of teaching musicians by combining the individual skills of the musical and physical specialist, a model now routinely available to elite performers in other disciplines.

Resident: £280

Non-Resident: £205

Code: 19/20M

“ This was a stimulating course with a wealth of information and insights. I enjoyed every minute of it and was taken by surprise when it came to the end!”

AT HOME WITH BRAHMS AND FRIENDS

Fri 4 - Sun 6 October

Tutor: Katy Hamilton

STANDARD: ALL

Musicians of the nineteenth century were just as likely to make music at home with their closest friends and colleagues as they were to attend (or indeed participate in!) public concerts. This course opens a door into the world of private music-making in the life of Johannes Brahms and his many professional and amateur musical acquaintances. Discover the story behind the famous Wiegenglied and the family for which it was written, as we explore the challenges and rewards of writing for domestic performance, and how such music might also find its way into the concert hall. Meet the many talented music-makers from Brahms' circle, from familiar names such as Clara Schumann and Pauline Viardot, to lesser-known contemporary composers including Heinrich von Herzogenberg and Hans Huber, and other great figures of Austro-German cultural life. Brahms specialist Katy Hamilton leads this journey into the chamber music of the composer's lifetime, full of familiar favourites and surprising new discoveries.

Tutor website: www.katyhamilton.co.uk

Resident: £280

Non-Resident: £205

Code: 19/298



LUNCHTIME TALKS WITH TRICIA THOMPSON

A new series of lunchtime talks with Associate Member of Trinity College of Music and experienced speaker Tricia Thompson.

Thursday 12 September 2019, 1pm

Bring Me Sunshine

The Lives and Work of Morecambe and Wise

The key to great comic delivery is timing, and Morecambe and Wise were absolute masters of their craft. They have been described as "the most illustrious, and the best-loved, double-act that Britain has ever produced". Find out about their lives and careers and enjoy once again some of their wonderful comic talent.

Thursday 17 October 2019, 1pm

Fingers Crossed!

Superstitions

The dictionary defines superstition as a widely held but irrational belief in supernatural influences, especially leading to good or bad luck. Why do we avoid walking under a ladder, take extra special care on Friday 13th, or tie boots to wedding cars? Come along and find out the origins of these and some other popular superstitions - but make sure you don't spill any salt!

Thursday 28 November 2019, 1pm

He's Behind You!

A History of the Pantomime

The Pantomime, a bizarre medley of fairy story, dance, jokes, songs and cross dressing, whether it's a lavish production in a theatre or a simple show in a church hall, for many it would not be Christmas without a visit to the pantomime. This talk will look at the origins of this most British form of entertainment and put you in the mood for Christmas – oh yes it will!

Tickets £15 per person per talk. The talk begins with a substantial buffet lunch. Call 01462 459446 to book.



MURDER MYSTERY DINNER!!



Come Die With Me! Join us for another murder mystery event over a three-course dinner. Meet the suspects, witness the murder, be a detective and find the killer! Professional actors will mingle with you throughout the evening and you are encouraged to ask them questions to help unravel the story and solve the mystery. Make sure you listen in to all that goes on over dinner for those vital clues. It will be the most exciting dinner you have ever had! Early booking is advised.

SUNDAY
6 OCTOBER, 6PM

**MURDER MYSTERY INCLUDING
3 COURSE SET MENU
£35 PER PERSON**

**ADD AN OVERNIGHT STAY WITH BREAKFAST
...IF YOU DARE!
SPECIAL DISCOUNT £30 PER PERSON**

EVENT CODE: 19/MM2

ALL WELCOME

Whether you are already familiar with Benslow Music and its activities or you are just discovering us for the first time, the Benslow Music Open Day is the place for you.

Come and relax in our wonderful gardens, enjoy a drink from our fully licensed bar or try some delicious freshly prepared food and browse through the many stalls we will have on-site. There will also be live music, a chance to explore our site and staff will be happy to show you around and to answer any questions you might have about our courses, concerts or our instrument loan scheme. A perfect opportunity to introduce your friends and family to the Benslow Music Experience.

Whether you are interested in music, arts or simply want to enjoy a nice day out with your family and friends, you'll find something for you.



 BENSLOWMUSIC

OPEN DAY
SUN 28 JULY, 10AM - 5PM

WORKSHOPS | LIVE MUSIC | FOOD AND DRINK | ARTS AND CRAFTS | FAMILY ACTIVITIES | AND MORE...

BOOKING COURSES

Telephone - The easiest way to book a place on one of our courses is to call us on +44 (0)1462 459446 between 9am and 5pm from Monday to Friday. A member of our team will ensure there is a place for you on the course, that we have all the details necessary and will take your card details over the phone for the required amount. An email confirmation will be sent to you the same day.

Online - If you prefer the convenience of applying online, we now offer this facility from the individual course listings on our website. Please complete the form at any time and we will respond within 48 hours with confirmation (or otherwise) of a provisional booking. We will provide details of how to pay the required amount to secure your booking by return email. Please note that if you choose to apply online we need to receive the payment within 7 days of the confirmation email being sent to secure your place.

Post - If you prefer to book by post, please complete the booking form in the back of this brochure, including either a cheque or card details, and post it to us. Typically you will get a response within 5 working days by email or post.

Whichever method of application you choose we will ask for a non-refundable deposit in order to secure your place. **The balance must be paid no later than four weeks before the course begins.** If it is not you will risk forfeiting your place as well as your deposit.

All bookings made less than four weeks before the course begins must be paid for in full at the time of booking. Occasionally we may be obliged to delay confirmation of your booking but will take deposit/payment only when we know we can accept it.

We accept Benslow Music Gift Vouchers, cheques, cash and most major debt/credit cards (please note that we do not accept American Express).

To keep our costs down, we ask if possible for you to pay by cheque, debit card or via bank transfer.

DEPOSITS

All deposits are non-refundable in all circumstances save where Benslow Music cancels a course. No deposit is required from those who are placed on waiting lists. Deposits are payable as follows:

Day course	Full course fee
2 night course	£40.00
3 night course	£50.00
4 night course	£60.00
5 night course	£70.00
6 night course	£80.00



EN-SUITE ACCOMMODATION AND SINGLE OCCUPANCY OF DOUBLE ROOMS

Additional supplements are payable per person at the time of booking. We offer a discount for clients sharing a standard twin/double bedroom.

Please visit our website for current rates:

www.benslowmusic.org/terms-and-conditions

WHAT DOES THE COURSE FEE INCLUDE?

A residential course fee includes Standard single accommodation (with hand basin and shared bathroom facilities), tuition, use of relevant facilities and full board, including any hot beverages, biscuits and cakes which are served at break times. Supplemental charges are payable for an en-suite room and for single occupancy of a double room. A non-residential fee includes all of the above minus accommodation and breakfast.

BURSARIES

Guests under 27 are entitled to a 25% discount on basic course fees (excludes room supplements). Bursaries are available to those individuals who can demonstrate need for financial assistance to enable them to attend our courses. Bursary holders must occupy Standard accommodation only. Please contact us for details and application forms.

REFUNDS

Refunds for withdrawal from a residential course only for any reason apply as follows:

More than 28 days before the start of the course - full refund less deposit

22 - 28 days before the start of the course - 75% refund less deposit

15 - 21 days before the start of the course - 50% refund less deposit

8 - 14 days before the start of the course - 25% refund less deposit

Less than 8 days before the start of the course - no refund

The date of refund is calculated once we receive a completed Cancellation/Transfer Form (these are available from info@benslowmusic.org). Refunds are not available for non-residential courses or for any other Benslow Music event or product, including concert tickets. **We strongly recommend that you take out insurance to cover cancellation costs.**

PHOTOGRAPHY

Benslow Music reserves the right to video and/or take photos of visitors to our campus. Material is used on our website, brochures and social media platforms. By submitting an application, you are giving your consent for these images to be used. If you do not consent to being filmed or photographed, please let us know.

DISABLED ACCESS

If you require the use of a disabled access room and/or you need a carer or guide to assist you during your stay please let us know at the point of booking so we can ensure we can meet your needs. We are happy to offer carers free accommodation (providing you are sharing a room) and free meals for the duration of your stay.

TRANSFERS

Fees may be transferred from one course to another subject to availability up to 14 days before the start of the course originally booked or the course to which it is desired to transfer, whichever is the earlier. A compulsory administration charge of £20 is payable. Transfers requested 14 days or less before the commencement of a course will be treated on a case by case basis but may not be possible. Transfers for current Members may be made without charge as long as the 14 day notice period is observed.

WAITING LISTS

If there is not an available place for you on a course at the time of booking, we will add you to a waiting list at your request. If a place subsequently becomes available, a member of the team will contact you by telephone (leaving a message if you are unreachable). You have until 5pm on the next working day to respond. If we do not hear back from you before this time, your place will be offered to the next person on the waiting list. No deposit is required if you are placed on a waiting list and we do not at any stage disclose position or any other client names on waiting lists.

DISCLOSURE

Please refer to our website for up-to-date course information, changes to tutors, repertoire and our full terms and conditions.


BENSLOWMUSIC
 CONCERT SERIES

TICKETS £15 • ALL CONCERTS START AT 8PM
PRE-CONCERT DINING £20

(FREE entry for under 27 year olds and carers accompanying a disabled ticket holder; excludes A Night of Jazz)

FRI 2 AUGUST

 TIM RICHARDS *jazz piano*
TUE 6 AUGUST

 SARAH LEONARD *soprano*

 STEPHEN GUTMAN *piano*
WED 7 AUGUST

 PHILIPPA DAVIES *flute*

 JAN WILLEM NELLEKE *piano*
FRI 16 AUGUST

 PAGODA PROJECT *folk jazz fusion*
FRI 30 AUGUST

WIHAN STRING QUARTET

SAT 7 SEPTEMBER

DAVID CAMPBELL, IAN SCOTT

 MARGARET ARCHIBALD *clarinets*

 JOHN FLINDERS *piano*
MON 16 SEPTEMBER

 CLARE WILKINSON *soprano*

 MICHAEL SOLOMON WILLIAMS *tenor*

 JACOB HERINGMAN *lute*
FRI 20 SEPTEMBER

PRIMROSE PIANO QUARTET

FRI 4 OCTOBER

FITZWILLIAM STRING QUARTET

TUE 15 OCTOBER

 MARCO MARCONI *jazz piano*

 SIMONE GUBBIOTTI *jazz guitar*
FRI 1 NOVEMBER

COULL STRING QUARTET

FRI 15 NOVEMBER

 JOGLARESIA *medieval band*
TUE 26 NOVEMBER

LONDON KLEZMER QUARTET

FRI 29 NOVEMBER

BINGHAM STRING QUARTET

 NIGEL CLAYTON *piano*
WED 4 DECEMBER

TEDESCA STRING QUARTET


 Free entry for 8 - 25 year olds is made possible by the encouragement and support of the **CAVATINA** Chamber Music Trust.


Benslow Music's concerts are supported by a grant from the Arts Council of North Hertfordshire.

Tickets may be booked through our website or by telephone during normal office hours on 01462 459446 and are also available at the door - subject to availability. We do not accept reservations without payment.

OUR PRE-CONCERT MENU IS THE PERFECT ADDITION TO YOUR BENSLOW MUSIC EVENING CONCERT EXPERIENCE. YOU AND YOUR GUESTS CAN ENJOY YOUR MEAL HOME-MADE BY OUR EXCELLENT CHEFS, ORDER AN INTERVAL DRINK AND JOIN OUR COURSE MEMBERS, PERFORMERS AND OTHER PRE-CONCERT DINERS IN A UNIQUE FRIENDLY AND SOCIABLE ATMOSPHERE.

FOR £35 PER PERSON YOU WILL RECEIVE RESERVED SEATING AT THE CONCERT, A TWO COURSE SET MENU AND A GLASS OF WINE (OR SOFT DRINK) SERVED AT YOUR TABLE IN BENSLOW MUSIC'S BEAUTIFUL VICTORIAN HOUSE SET WITHIN OUR FOUR-ACRE GARDENS.

DINNER SERVICE STARTS AT 6.30PM, ALLOWING YOU PLENTY OF TIME TO ENJOY YOUR MEAL AND BE SEATED FOR THE 8PM PERFORMANCE. ADVANCE BOOKING IS REQUIRED.

PRE-CONCERT DINING IS AVAILABLE FOR MOST OF OUR CONCERTS BUT EXCLUDES THE BENSLOW BAROQUE ORATORIO AND A NIGHT OF JAZZ.



MONDAY AFTERNOON CONCERTS

MON 9 SEPTEMBER, 3PM

UTE LEPETITE-CLARE *mezzo soprano*
Quiet Poetry: Emily Dickinson's Life and Poems

MON 14 OCTOBER, 3PM

KATIE SAZONOVA *flute*
SALLY HALSEY *piano*
Winner of the first Young Artist Tuscany Award from Flutes in Tuscany 2018

MON 11 NOVEMBER, 3PM

BRIDGET KERRISON *soprano*
TREVOR HUGHES *piano*

MON 9 DECEMBER, 3PM

CORIOLIS WIND QUINTET
Founded in 2017 by five former and current postgraduate students of the Royal Academy of Music

On the second Monday of each month (excluding July and August), the Friends of Benslow Music run a series of concerts in order to raise funds to help support the work of the Trust.

The concerts begin at 3pm and tickets (available at the door only) are £10 and include a home-made tea following the concert. If you would like to join the Friends of Benslow Music and help us support our invaluable work, please call us on 01462 459446 or email: friends@benslowmusic.org.



Do you have a musical instrument that you could lend to the Benslow Instrument Loan Scheme?

Contact us and help to inspire the next generation of young musicians

 **BENSLOWMUSIC**
INSTRUMENT LOAN SCHEME
www.benslowmusic-ils.org

01462 420748
Charity no. 313755

FOR BUSINESS AND LEISURE



STAY AND PLAY • BED AND BREAKFAST • CONFERENCE HIRE
SPECIAL EVENTS • LICENSED BAR • STUNNING GARDENS

For further information, availability and rates please contact us

GIVING AND LEGACIES

Benslow Music is probably unique. No other organisation in the world, as far as we can discover, offers as wide a variety of year-round short music courses for non-professionals, delivered by renowned performers and expert teachers in an atmosphere of friendly encouragement. We think this work is important. The practice of music can transform people, and we see that happening at Benslow Music week in, week out.

Thanks to the foresight and generosity of previous benefactors, we are able to run these courses at competitive rates in a home which is secure for as long as we continue to do the job which we're passionate about.

Yet we still walk a financial tightrope, and breaking even on our operation each year is a challenge. And despite many recent improvements to the fabric we know that we also still have much to do on that front.

If you would like to donate a sum, small or large, to help us further our improvement and development please email us at info@benslowmusic.org or call 01462 459446, or look out for further information on our website. And should you feel that we merit remembering in your will, please make time to have a word with your appropriate advisor.

Thank you.

SPONSORSHIP AND ADVERTISING

Through our huge number of events across the year, Benslow Music is the ideal place to advertise to both a local and national audience. If you would like to sponsor a concert, a course or any other element of Benslow Music's work either through donation, guarantee against loss or advertising in this brochure or our concert programmes please let us know by calling 01462 459446 or by emailing us at info@benslowmusic.org.

MEMBERSHIP

By becoming a Member of Benslow Music you join a large family of well-wishers whose subscriptions help us to maintain and improve our service to you. In return we offer you the range of benefits below:

- 1) Book places on Benslow Music courses four weeks before non-members
- 2) Use our extensive Music Library free of charge at any time
- 3) Book free practice space immediately before the start of your course (subject to availability)
- 4) Advantageous conditions if you have to cancel your place or need to transfer to an alternative course
- 5) Exclusive bi-annual Members' Bulletin
- 6) Attend our Annual General Meeting and take part in the election of Trustees

From time to time we may also offer other exclusive benefits.

HOW MUCH?

Membership rates are as follows:

Individual £30.00 per year

Family £48.00 per year (covers all living at the same address)

Student £5.00 per year (up to the age of 27 and in full time education)

Life £350.00

To become a Member of Benslow Music, please complete and return the form at the back of this brochure or speak to us on your next visit.

CORPORATE MEMBERSHIP/PARTNERSHIP

If you or the organisation for which you work are interested in supporting us through Corporate Membership or any other form of formal Partnership please call, email or write to us. We would be delighted to talk through how we might be of mutual help to each other.



Booking form

Title and Full Name(s)
Address

Telephone
Email
Membership no.

	Course A	Course B		Course A	Course B	
Course Title			Room Type *			
Course Code				Single or Double?		
Instrument/Voice					Sharing with <small>(name)</small>	
Standard				Room supplement <small>(No of nights x nightly rate)</small>		£
Start Date					Total Supplements Paid	
Deposit/Fee	£	£				
Total Deposits Paid		£				

Vegetarian. Please inform us of other dietary needs or allergies

* Standard or En-suite, subject to availability. For rates see our website:
www.benslowmusic.org/terms-and-conditions

Please enclose a cheque made payable to Benslow Music Trust or complete the payment card details below:

Please debit my Visa Debit Maestro Visa Credit Mastercard

Card number

Valid from Expiry date Security no. Amount £

Name and address of cardholder if different from course applicant

Signature

Date

I/We would like to become a Member of Benslow Music Trust

Annual Membership £30 Family Membership £48 Life Membership £350 Student Membership £5 Donation £

(Covers all living at the same address)

(People up to the age of 27 in full-time education - no voting rights)

Title and Full Name(s)

Address

Telephone (Home/Work/Mobile)

Email

Date of Birth (if under 27)

Signature

Date

By signing this form I consent to having my details held on record.

GIFT AID DONATION

Please complete the following Gift Aid Declaration. This allows us to claim tax relief on your membership fee and any additional donations, thus increasing the value of your gift.

I confirm that I want to Gift Aid my donations and membership subscriptions that I have made in the last 4 years and in the future to Benslow Music Trust, Benslow Lane, Hitchin, SG4 9RB. I am a UK taxpayer, and understand that if I pay less Income Tax and/or Capital Gains Tax than the amount of Gift Aid claimed on all my donations in that tax year it is my responsibility to pay any difference and that I may cancel this Declaration at any time.

Signature

Date

Please enclose a cheque made payable to Benslow Music Trust or complete the payment card details below (these details are not kept on record):

Please debit my Visa Debit Maestro Visa Credit Mastercard

Card number

Valid from Expiry date Security no. Amount £

GETTING TO BENSLOW MUSIC

A1(M)



From the A1(M), exit at Junction 8, taking the A602 towards Hitchin. Follow the A602 until you reach a large roundabout. Take the fourth exit (Park Street) to Hitchin Town Centre. At the small roundabout, take the second exit onto Queen Street and continue for about half a mile. As you approach the traffic lights, keep in the right-hand lane and continue straight until you reach a roundabout. Take the third exit onto Highbury Road and then **immediately** turn left onto Benslow Lane.

M1



From the M1, exit at Junction 10 (Luton Airport) and follow signs towards Hitchin (A505). At the first main roundabout in Hitchin (after one mini-roundabout) take the third exit (right) onto the A602. Continue until you reach another main roundabout. Take the first exit (Park Street) towards Hitchin Town Centre. At the small roundabout, take the second exit into Queen Street and continue for about half a mile. As you approach the traffic lights, keep in the right-hand lane and continue straight until you reach a roundabout. Take the third exit into Highbury Road and then **immediately** turn left into Benslow Lane.



Trains to Hitchin from London King's Cross, Peterborough and Cambridge run approximately every half an hour. Thameslink services from London St Pancras and Brighton stop at Hitchin on weekdays. Benslow Music is a five-minute walk from Hitchin station.

As you leave the station, head towards the main road. Immediately before Tesco Express, turn left into 'Burton's Path'. As the path splits in two, bear left, bringing you out onto Benslow Rise. Keep right and follow the road to the end. St Andrew's School will be in front of you. Turn left up the hill and Benslow Music will be on your right-hand side.



Both Luton and Stansted airports are close by and Airport coach services 777 and 787 stop in Hitchin. For more information on how to reach us by public transport please visit www.traveline.org.uk.



If travelling by train from Stansted you will need to change in Cambridge.

www.benslowmusic.org

Benslow Music Trust, Benslow Lane, Hitchin SG4 9RB
+44 (0)1462 459446 • info@benslowmusic.org

A company limited by guarantee. Registered in England No 408404
Registered charity No 313663. Registered office as above

COURSES AND CONCERTS

APPLY NOW ON OUR WEBSITE OR CALL +44 (0)1462 459446